

stainless steel handrail mini top rail slot tube for glass balcony railing designs

Model 1: round slot tube :

- tube size: diameter 25.4mm
- wall thickness: 1.5-2mm
- groove size: 14*14mm
- for glass thickness: 10-12mm
- each piece 5.8meter, and can be cut as your demand



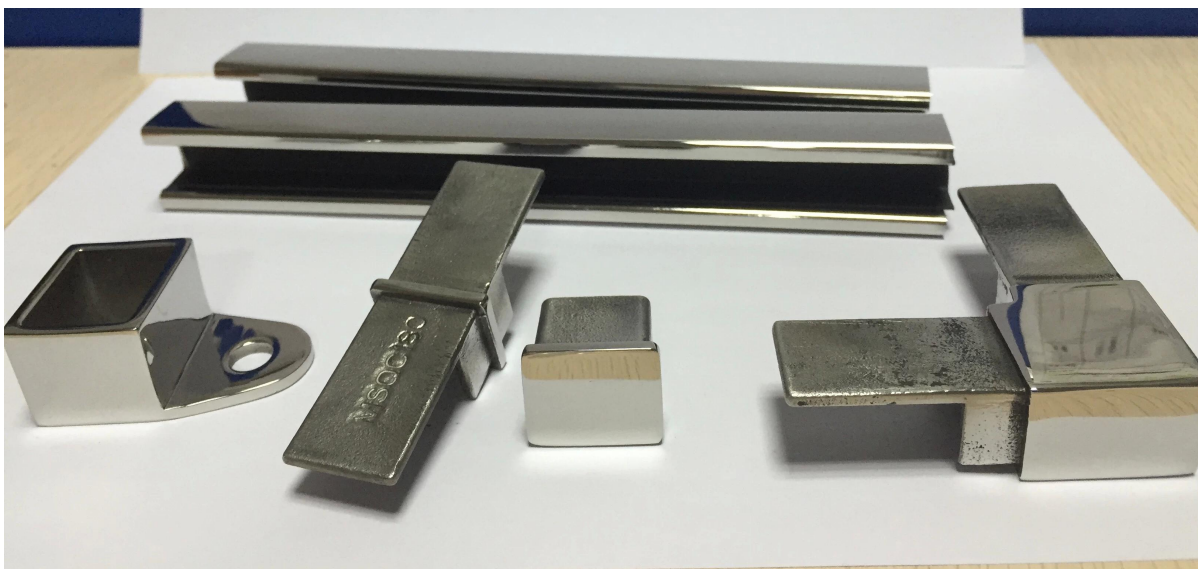
Model 2: square slot tube :

- tube size: diameter 25*21mm
- wall thickness: 1.5-2mm
- groove size: 14*14mm
- for glass thickness: 10-12mm
- each piece 5.8meter, and can be cut as your demands



Fittings :

- square end cap
- square 90 degree connector
- square 180 degree connector
- square wall connector
- material: AISI 304/AISI316/AISI316L
- Finish: brush or mirror
- Application: used for frameless glass fencing ,glass balustrade, top railing







Project case photos :

1. Indoor corridor





2.Out door deck



Spigot: [javascript:void\(0\);/*1464243645885*/](javascript:void(0);/*1464243645885*/)



Standoff: [javascript:void\(0\);/*1464243792836*/](javascript:void(0);/*1464243792836*/)



Any needs or question, please contact with me freely :

Contact: Joey Lan

Email: sales02@launch-china.cn .

Skype: launch-02. Mob/Wechat/WhatsApp: 86-18707054903 .