

Product name:glass clamp, D clamp , glass clip , glass railing clamp

Country of Origin:Guangdong province , China

Material:stainless steel 316 /316L

Finish:satin / mirror

Fabrication process:casting --modifying--drilling/tapping --polishing--packing

Application Area: to be installed on square / round railing post , wall , floor

Port:Shenzhen

Trade terms available: FOB , CIF , C&F , CFR , EX-WORKS

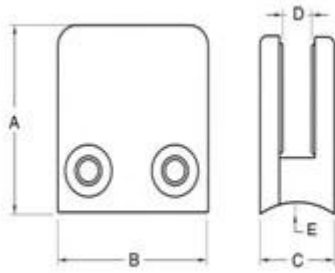
Payment terms available:T/T ; L/C at sight ; Western Union , Alibaba Escrow

We sell glass clamp on Alibaba:

http://www.alibaba.com/product-detail/stainless-steel-rod-holders-glass-clamp_60011012467.html



This type of glass clamp can be fixed to round post and square post. Below are the size of the clamp:



Item No.	A	B	C	D	E
G101	51	41	25	11	0
G101R	55	41	25	11	R-21.5
G102	44	44	25	11	0
G102R	48	44	25	11	R-21.5
Suitable for 8-10mm glass					



G102R



G102

the clamp usually used with stainless steel post to hold glass panels, for balcony railing, terrace railing, staircase. both indoor and out door are OK.



