

stainless steel top rails for 8-13.52mm thickness glass

1. stainless steel top rails for 8-13.52mm thickness glass description.

Material: stainless steel 304/316/316L

Finish: Brushed or Mirror polished

For glass thickness : 8-13.52mm thickness

Dimension:

---Round shape, Diameter 25.4mm, groove 14*14mm,

---Square shape, 25*20mm, groove 14*14mm,

5.8 meter per length , or as per your requirement cut into sections

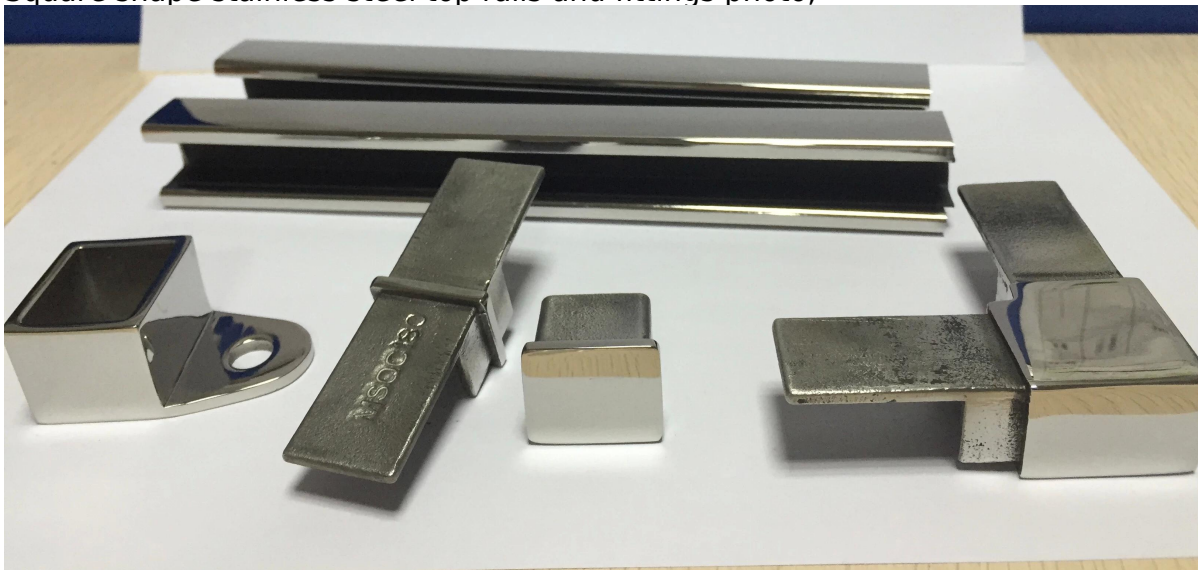
2. Square shape stainless steel top rails and fittings:



Square slot handrail series



Square shape stainless steel top rails and fittings photo,

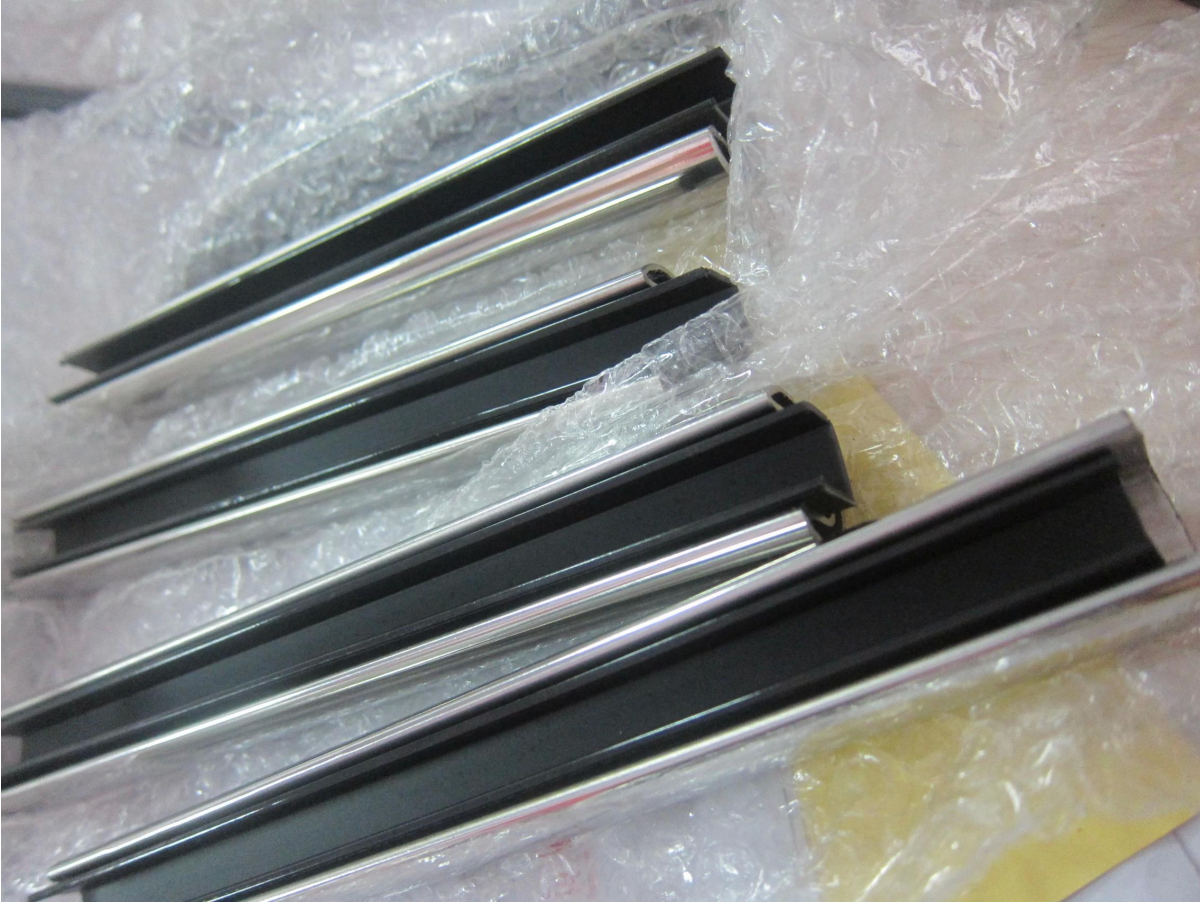


3. Round shape stainless steel top rails and fittings:



Round slot handrail series

Round shape stainless steel top rails and fittings photo,



4. stainless steel top rails project for your reference:

1). Balcony railing designs stainless steel top rails project□



2). stainless steel top rails outdoor deck glass railings:



3). stainless steel top rails indoor glass railings:



5. Square base spigot:

Spigot: [javascript:void\(0\);/*1464243645885*/](javascript:void(0);/*1464243645885*/)



Thanks for your visit, Any interested or needs, please contact with me freely :

Joey Lan

Shenzhen Launch Co., Ltd

www.launch-china.cn www.chinabalustrade.com

Email: sales02@launch-china.cn.

Skype: launch-02. Office: 86-755-86037559.

Add: B5-003, 5/F-Block 3, Yilida Building, No.1092 Nanshan Road, Nanshan District, Shenzhen, china. Postal code 518054.