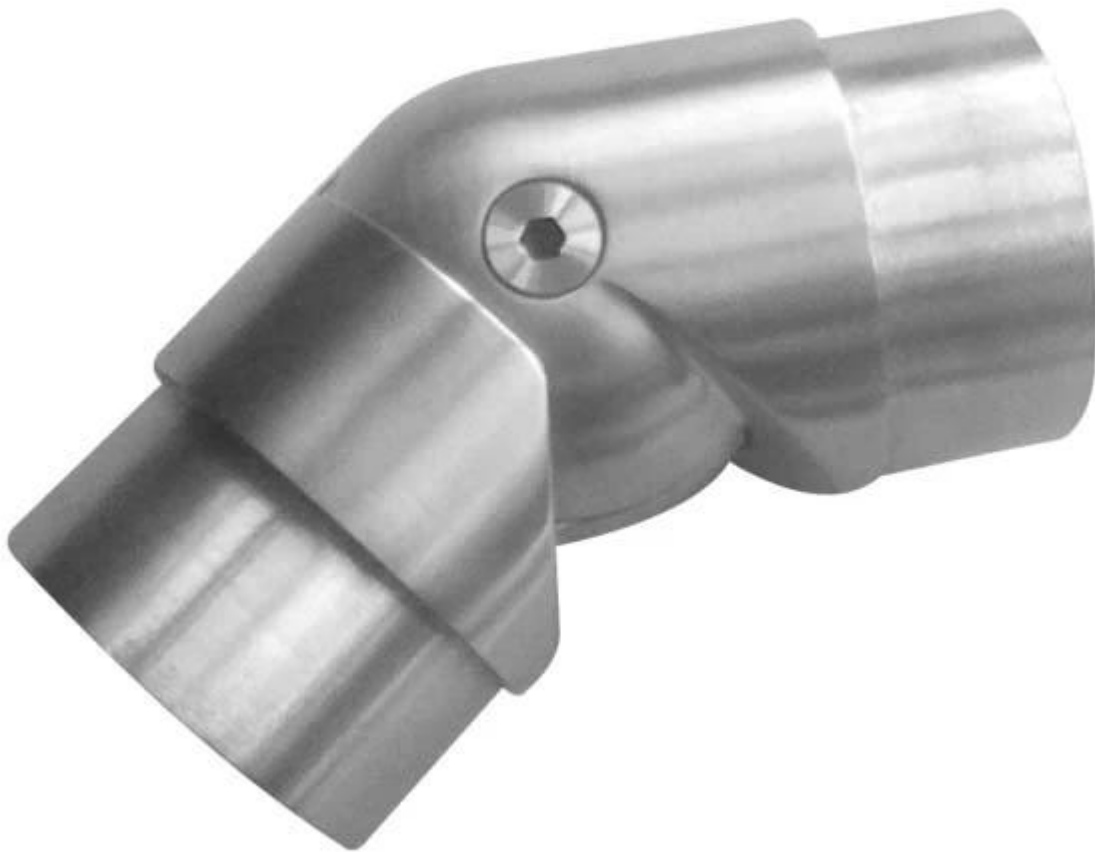


Stainless Steel Polished Tube Connector

Product description:

1. Material: Stainless steel 304/316
2. Finish: Satin or mirror polished
3. For tube size: $\phi 50.8\text{mm}$

Products information





Project photos



Package details: One pc into one plastic bag, then into one box.

Need a quote or have any questions, please leave a message.

Or contact me with the information below. will get back to you ASAP!



季敏 Merlin Ji

Senior Sales Representative

☎ (86) 189 6294 5180

深圳市南山区南山大道1092号亿利达大厦B区3栋5003
Room 5003, Building 3, Yilida Building, No.1092
Nanshan Road, Nanshan District, Shenzhen, China
postal code 518054

☎ (86-755) 8603 7559

☎ (86-755) 8637 2611

✉ sales06@launch-china.cn

🌐 www.launch-china.com

🌐 www.chinabalustrade.com