

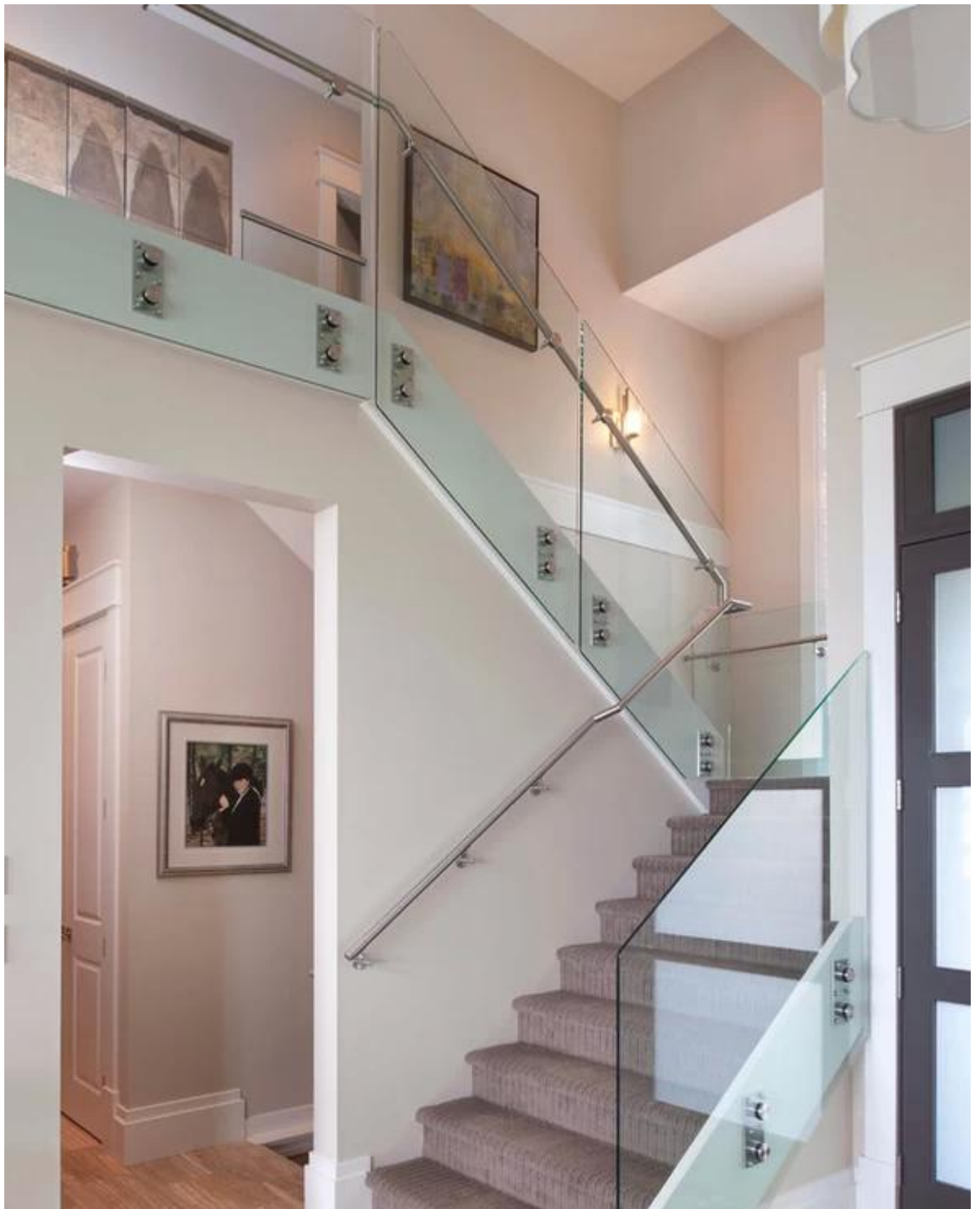
stainless steel twin standoff with backplate

Description

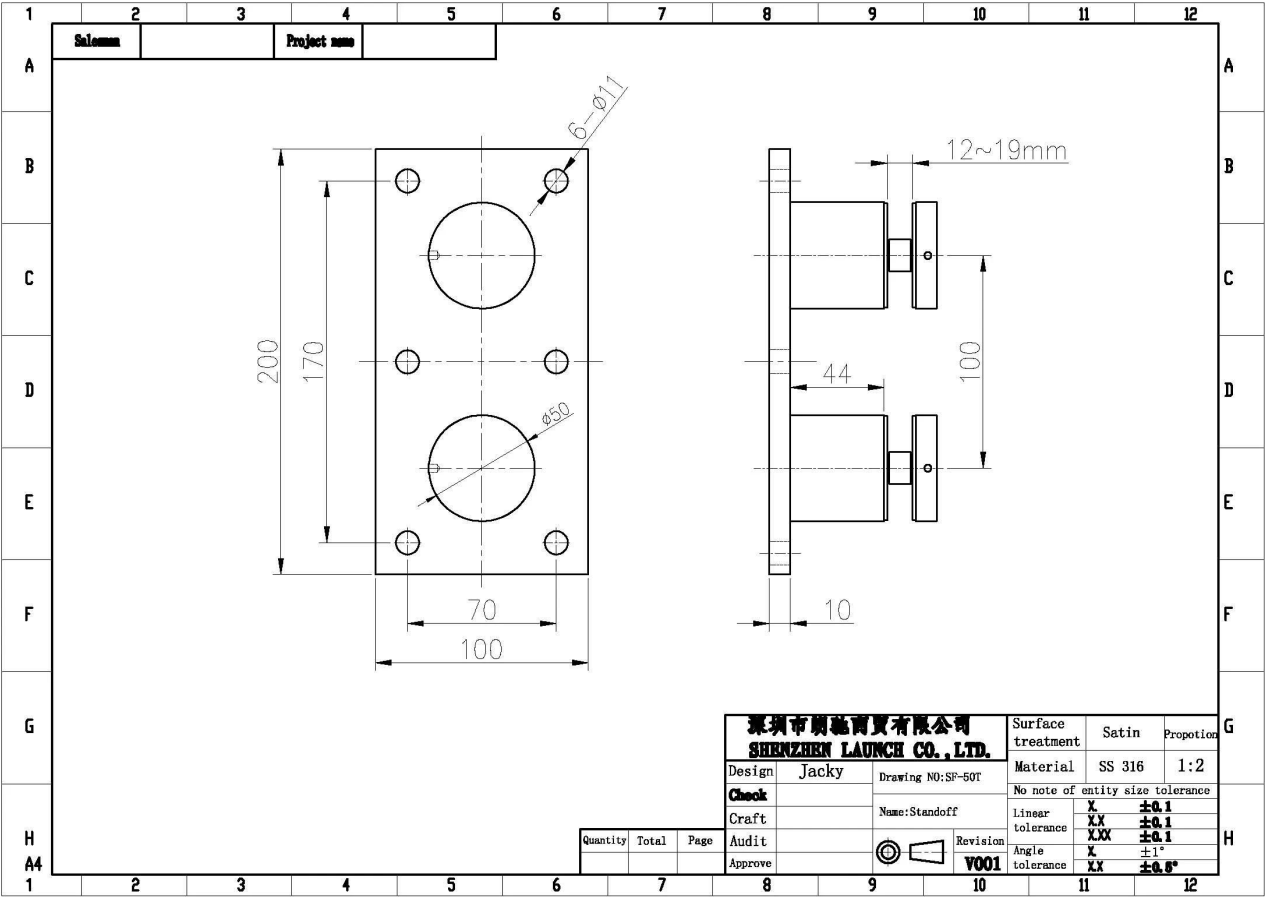
1. Model No.: SF-50T
2. material: stainless steel 316
3. finish: satin or mirror
4. for glass thickness: 10-19mm
5. size: 50*10mm cap, 50*30mm body
6. mounting plate size: 200*100*10mm







Drawing



[Please feel free to contact us if you are interested.](#)

Email: sales03@launch-china.cn

Skype: launch_03
