

Shenzhen launch manufactures 316 stainless steel solid glass standoff bolt both wood mount and concrete mount .

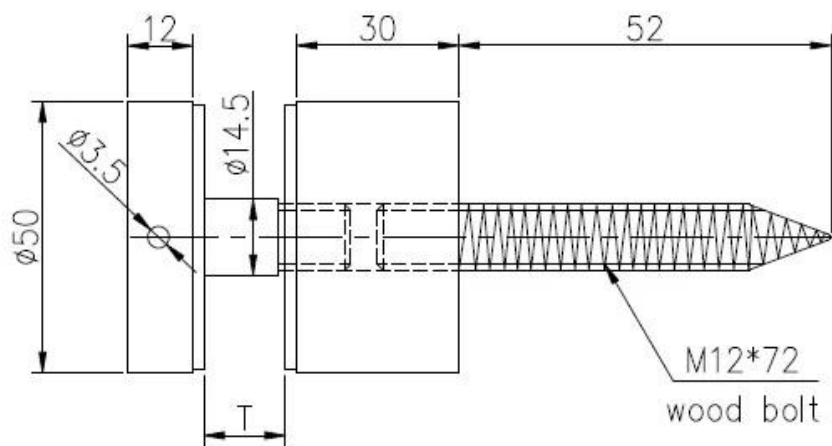
Below is specs for wood mount glass standoff bolt .

1. material 316 stainless steel anti-rust
2. brushed finish easy to maintain
3. 50mm dia
4. 50\*12mm cap
5. 50\*30mm body
6. M12\*72 wood screw

photo for wood mount glass standoff



drawing for wood mount standoff bolt



深圳市朗馳商貿有限公司 SHENZHEN LAUNCH CO., LTD.			Surface treatment		Proport:
Design	Jacky	Drawing NO: SF-68	Material		1:1
Check		Name: Standoff	No note of entity size tolerance		
Craft			Linear tolerance	X	±0.1
				X.X	±0.1
				X.XX	±0.1
Audit			Angle tolerance	X	±1°
Approve				X.X	±0.5°
Quantity	Total	Page	Revision	V001	

## Project photos .

balcony railing designs wood mount 12mm glass  
standoff bolt 316 stainless steel



Pool fence area wood mount 12mm glass standoff bolt 316 stainless steel



Staircase glass railing wood mount 12mm glass standoff bolt 316 stainless steel



We also have glass standoff mount to concrete ,  
please check out below and click open for more  
details .





And  
standoff with base plate 100\*200mm , very stable  
design



**SF-50 T**