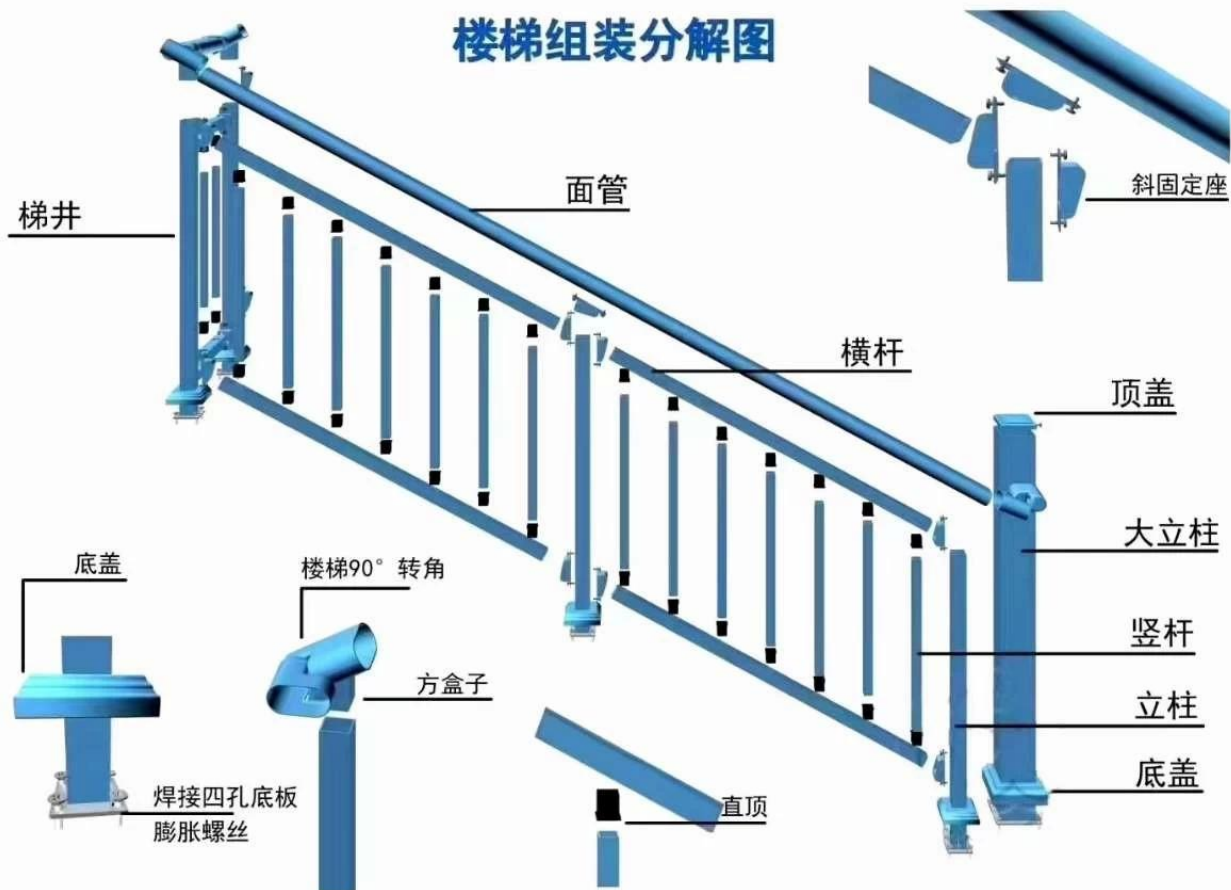


Easy assembly affordable cost wrought iron balustrades handrail for outdoor stairs modern design for home decoration .

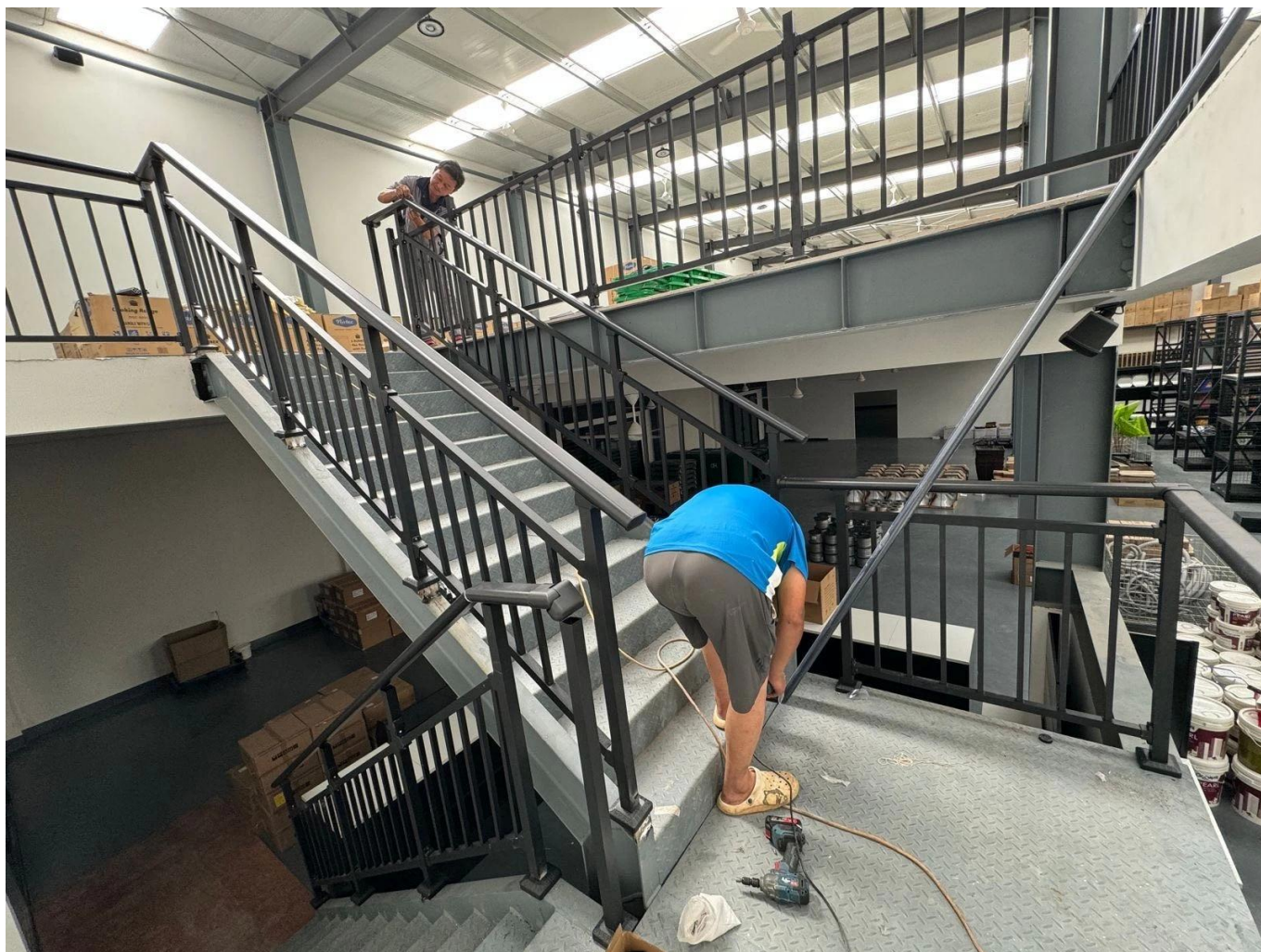
item	wrought iron balustrades handrail for outdoor stairs
Dimensions	Top handrail 80*40mm ; 40*40mm post,12*12mm vertical rails , 32*32mm middle rail
Material	ALUMINUM , galvanised steel , zinc steel
Finish	powder coating (Black color , grey color , as per panton color requirement)
Assembly	easy DIY with brackets &screws



楼梯组装分解图







About SHENZHEN LAUNCH CO., LTD-

COMPANY INTRODUCTION

KEBIL 科比奥®
深圳市朗驰商贸有限公司
SHENZHEN LAUNCH CO., LTD.



Shenzhen Launch Co., Ltd was founded in 2004, with headquarter located in Nanshan Shenzhen , and factory located in Tangxia Dongguan . We have over 20 years experience in supplying construction materials and we've established a stable cooperation with more than 500 companies worldwide . We manufacture not only high quality balustrade handrails, customized stairs & prefabricated balconies , but also customized aluminum glass doors & windows and shower enclosures . Benefit from the strategic location of Shenzhen-a manufacturing and export hub , we are able to optimize production and logistic efficiency for our customers , enabling our customers to reduce cost and save time on hundreds of construction projects . Do not hesitate to contact us whenever you have any enquiries.

[READ MORE](#)



OUR ADVANTAGES



Wide Range of Products

From stair handrails, balcony railings, to customized stairs, prefabricated balconies to bathrooms - our diverse products are suitable for residential, commercial and industrial projects.



Excellent Quality and Craftsmanship

Each product goes through strict quality control and is manufactured with high-quality materials such as stainless steel, aluminum alloy, tempered glass. We follow international standards (ISO, CE) to ensure the lifespan and performance of the products.



Customization and OEM Service

Our R&D team works closely with customers to provide tailor-made solutions.



Competitive Prices and Fast Logistics

Taking advantage of Shenzhen's strategic location as a manufacturing and export hub, we optimize costs and ensure timely global delivery by sea, air or land.



Professional Customer Support

Our multilingual team provides full assistance from product selection and quotation to after-sales service to ensure a one-stop experience.

CERTIFICATE DISPLAY



