

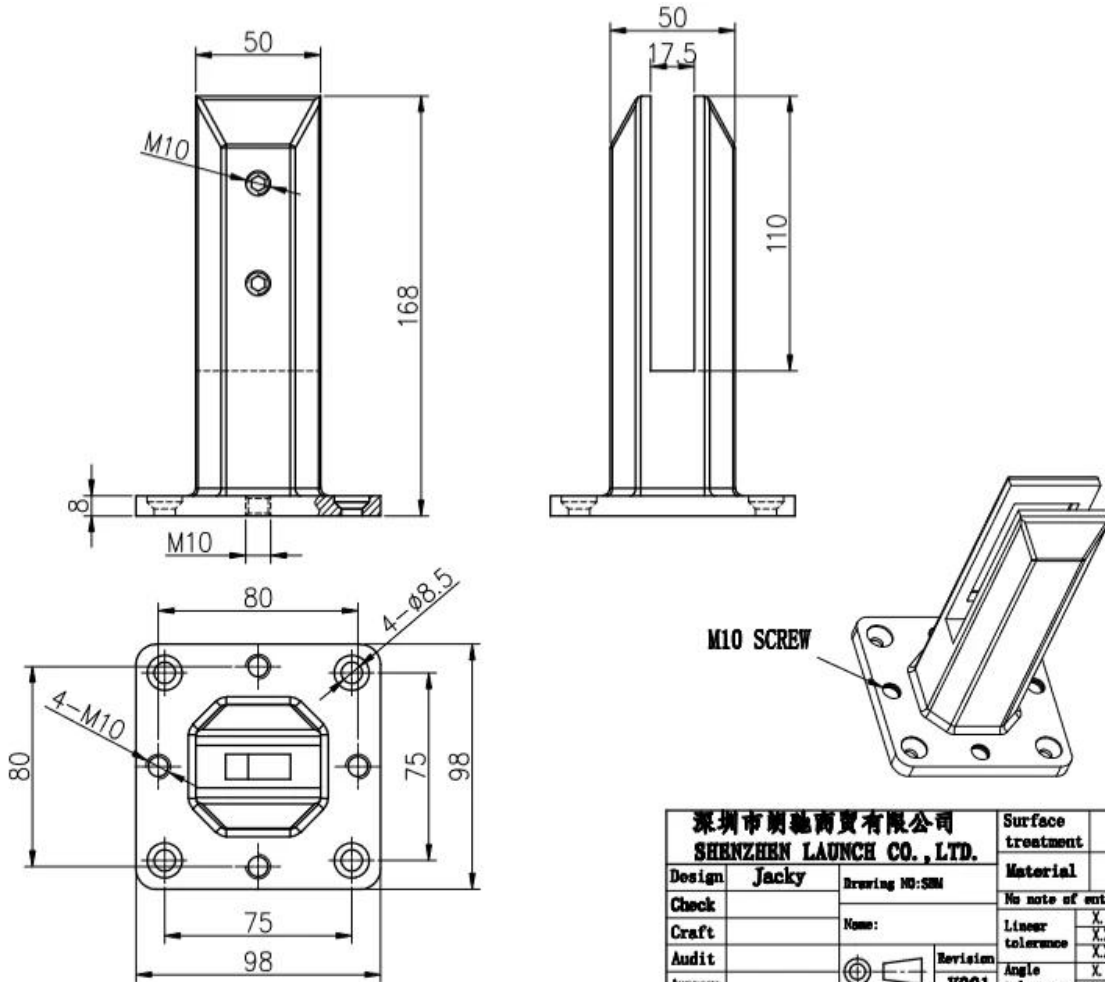
Ajustável Placa Duplex 2205 Matte Black Square base de vidro torneira modelo # SBM para Frameless Vidro Corrimão Cerca da piscina etc.

O nosso espigão de vidro é ajustável com 4 pequenos furos adicionais e parafusos na placa de base e placa de nivelamento 1 pc de ser usado na parte inferior do espigão para ajustar o nível do solo, quando não é mesmo.

1. Características do Adjustable Duplex 2205 Placa Matte Black Square Base de torneira de vidro, SBM

Material dotorneira Principal corpo	duplex 2205
Material para parafusos, a cobertura de base, a placa de nivelamento	316 de aço inoxidável
Terminar	Matte Black revestimento em pó ou chapeamento electro; cetim; espelho
espessura de vidro	vidro espessura 10-13.52mm
Altura	168 milímetros; ou pode ser personalizado
junta de plástico	Feito de material de nylon, que pode durar o tempo ao longo da vida
parafuso de concreto para atender	M8 * 100
Peso da Unidade per pc	1,45 kg
Em estoque	sim
MOQ.	2 pcs

2. dimensões do SBM copo pigot-



深圳市朗馳商貿有限公司 SHENZHEN LAUNCH CO., LTD.		Surface treatment	Proportion
Design	Jacky	Material	1:2
Check	Drawing NO: SM	No note of entity size tolerance	
Craft	Name:	Linear tolerance	X ±0.1
Audit	Revision	XX	±0.1
Approve	VOG1	Angle tolerance	X ±1°
			XX ±0.5°

3. Carregandoteste&MaterialtesteparaSBMcopospigot-

LOADING TEST FOR SBM

Introduction

MTS Metallurgical Testing Services was engaged to witness the installation of a sample pool fence spigot and to subsequently conduct load tests on the spigot to the requirements of Australian Standard AS1926.1 - 2012.

Standard/Specification AS 1926.1 - 2012, Section 3.2 and Appendix B

Results Summary

(For details of individual tests, refer to the tables on the following pages.)

ID	Item/Heat No.	Dimensions/Type/Details	Finish	Overall Assessment
14117/01	SSRM316	70mm Square, Base Plate 316 Stainless steel	316l	COMPLIES

Remarks

After completion of the testing, the spigot was found to be in sound condition with no breakage, tearing or signs of fracture and no looseness of the fixings.



Colin Cousins
Metallurgical Testing Manager



Accreditation No: 15624
Accredited for compliance
with ISO/IEC 17025

Strength Test

Test Specification AS 1926.1 - 2012, Appendix B Test Procedure MTS-TP3.1 Compression Tests - Products

Specimen ID	Observations	Assessment
14117/01	Test Equipment: Hydraulic ram and 10,000 N load cell Test Load: 330N Load Duration: 45 Secs Deflection under load: 1 mm Permanent Deflection after removal of test load: 0 mm	COMPLIES

Requirements No permanent damage or loosening of fixings.



12/16/2020 5:54:18 PM

Method: Fe-30
 Comment: Cr-, Cr/Ni-steel
 Type Standard 18--8

12/16/2020 5:54:09 PM

Type corr.concentr.

Sample Name:

Sample ID:

	C	Si	Mn	P	S	Cr	Mo	Ni
	%	%	%	%	%	%	%	%
< x > (1)	0.0224	0.8873	1.1010	0.0263	0.0032	21.6796	3.0718	5.5691

	Al	Co	Cu	Nb	Ti	V	W	Pb
	%	%	%	%	%	%	%	%
< x > (1)	< 0.0005	0.0797	0.1603	< 0.0002	0.0044	0.0893	0.0305	< 0.0002

	Sn	Sb	B	N	Fe			
	%	%	%	%	%			
< x > (1)	0.0092	< 0.0004	0.0024	0.1024	67.1600			

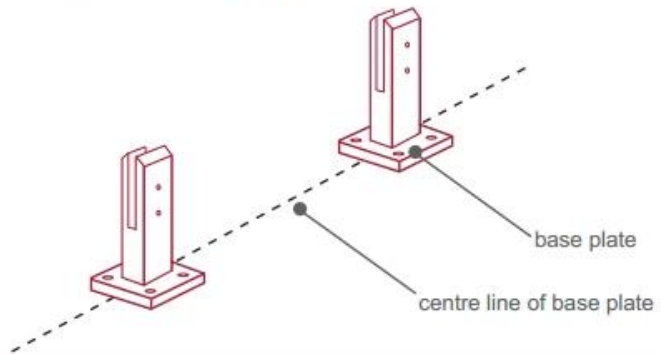
4.InstalaçãoinstruçõesparaSBMcopispigot-



fixing method: base plate spigots

Mark out the centre line of proposed glass fence with a chalk line. Determine clamp location based on a sheet size (recommendation on pages 1 & 2). Use base plate as a template to mark out the hole positions and drill holes to suit.

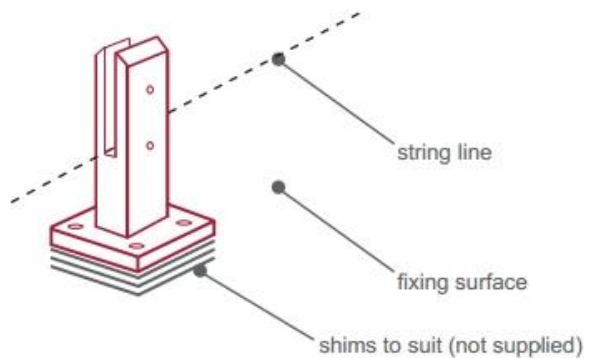
Note: Do not exceed 100mm gaps between glass panels. Optimum gap is 40mm to 60mm



Now the base plated spigots can be fitted to the floor and plumbed via shims (not supplied) under the base plates. Be sure to tighten firmly as the smallest of movement at the base plate will result in noticeable movement at the bottom of the glass fence.

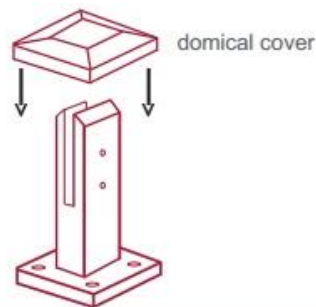
Tip: By setting the two outer spigots of your total span, a string line can be run in the 'throat' of the spigots, giving correct height for all spigots in between

Note: Do not exceed 100mm gap from the fixing surface to the bottom of the glass



When all spigots are installed, slip domical cover the top of the spigot to hide fixings. It will be necessary to turn the adjustment screws on the spigot face all the way in to allow cover to pass over

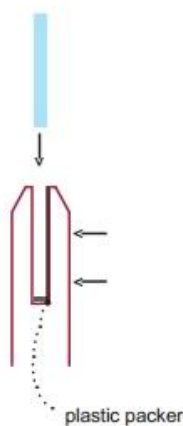
Note: Same installation method applies to round base plate spigot



The glass is then installed to the spigots. Place plastic packers between glass & spigot, at no stage should glass touch the metal

How adjustability works:

1. Place glass in spigot
2. Fix/ tension glass both sides with allen key

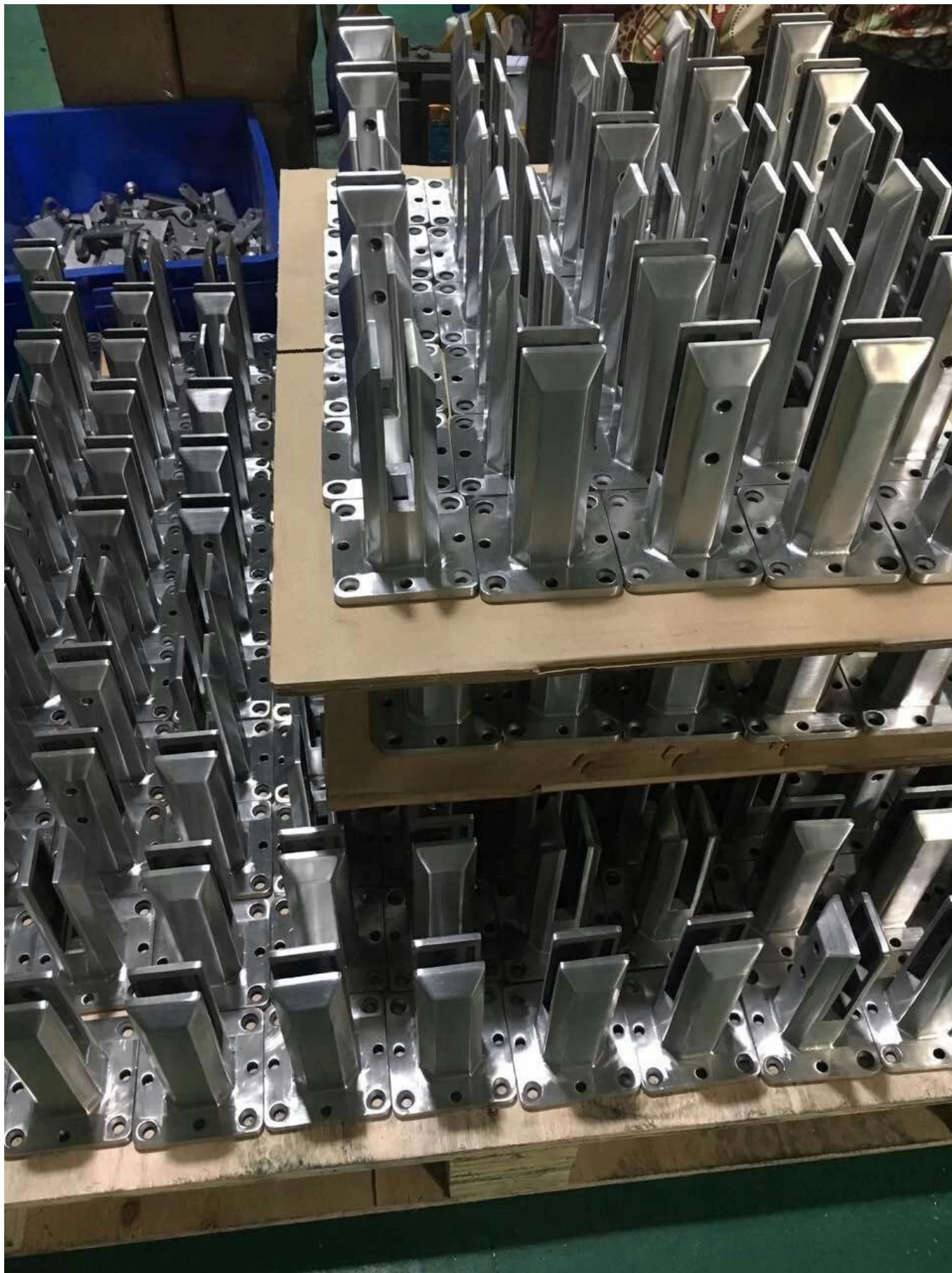


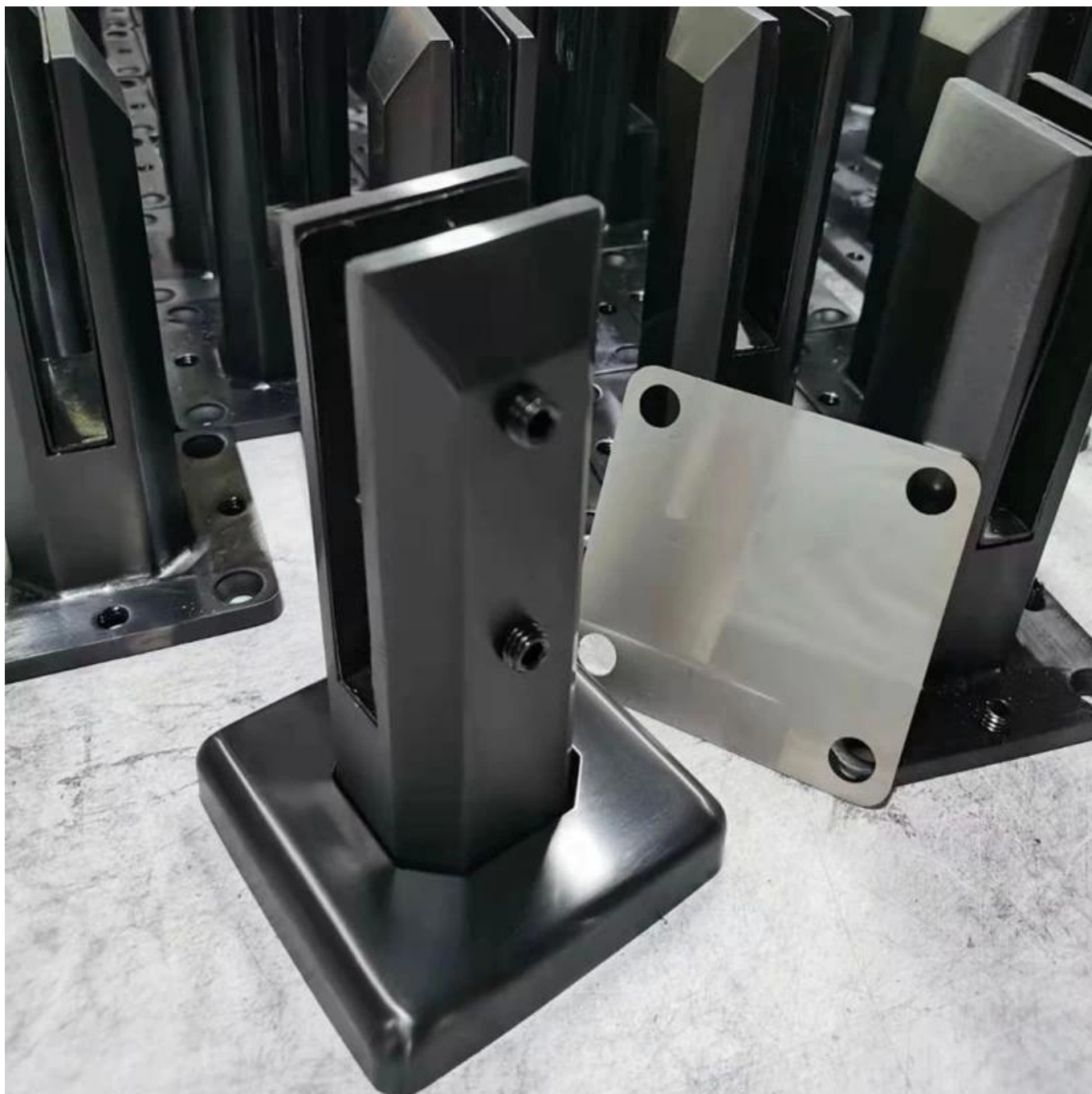
5.EmbalagemdetalhesparaSBM-

1 pc em uma caixa branca; 12 pcs em um carton-



6. Massa Produção ProcessoparaSBMcopotorneira-





7. Mais modelos do copotorneira para sua seleção-





MODEL # SBM



Glass spigot

MODEL # SCM



MODEL # RBM



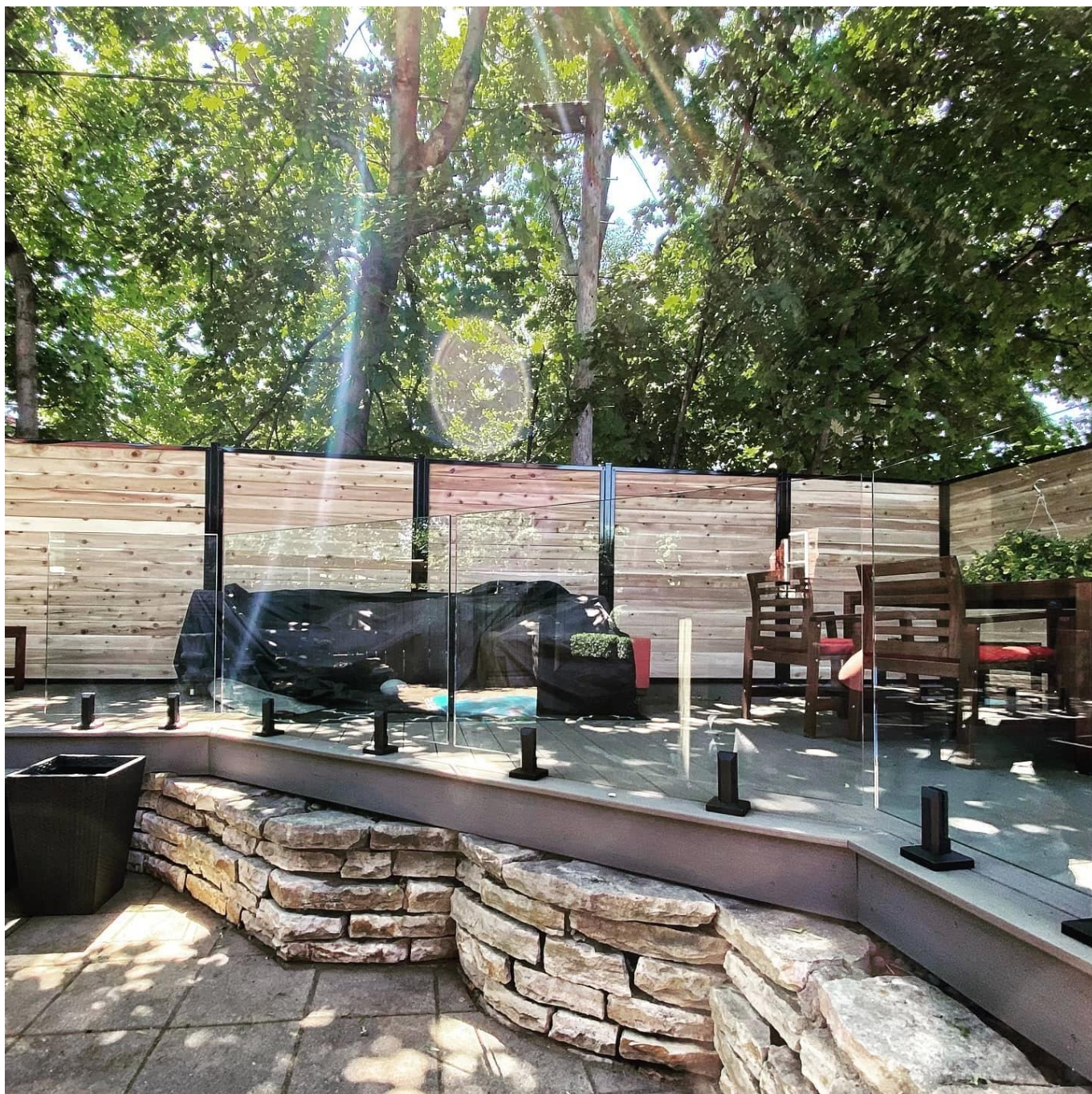
MODEL # RCM

8. Projeto Fotos do frameless Copotrinhos com copotorneiras-









Temos também de vidro dobradiça & travas magnéticas e braçadeiras de vidro e vidro temperado para ir com todo o sistema de vidro sem moldura trilhos.

Não hesite em contactar-nos agora para obter cotações!

Shenzhen Lançamento Co., Ltd

Verificado pela SGS, Relatório No. 19536352_P + T

Escritório add:

B5-003, 5 / F-Block 3, Yilida Building, No. 1092 Nanshan Road, Nanshan District, Shenzhen, China, código postal 518054

Tel: 86-755-86037559 Fax: 86-755-86372611

MOB (WhatsApp, WeChat, Viber) 86 135 9027 3543

Contato:CeliaChen