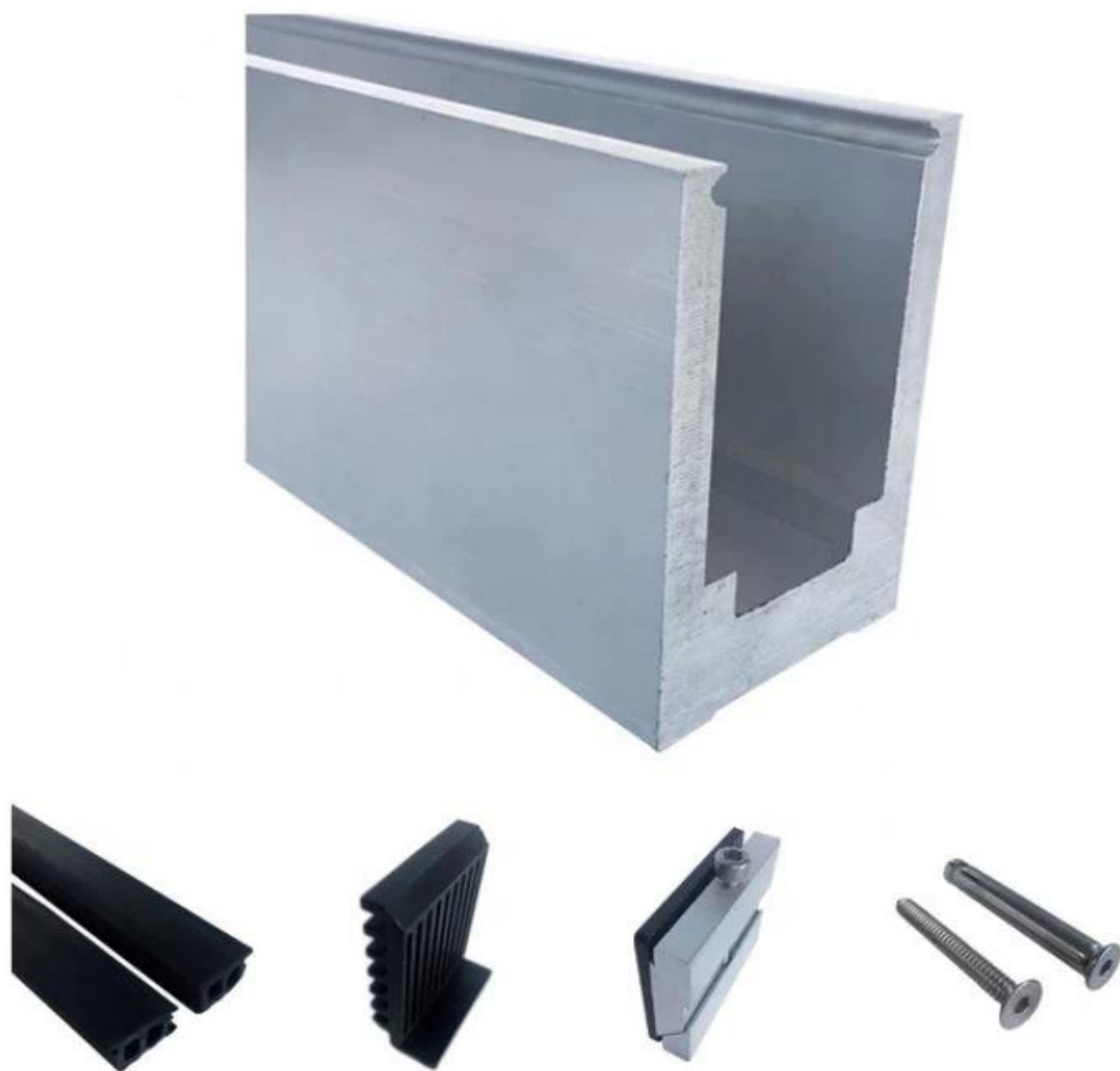


Canal de base em U de alumínio geralmente fixado ao solo, colocado na parte inferior dos sistemas de gradeamento de vidro para suportar o vidro. O sistema de corrimão de varanda é uma das aplicações mais comuns que precisa dele, pois pode dar uma visão ampla para desfrutar de belas paisagens enquanto você está tomando um café ou lendo um livro na varanda.

Mostra de Produto

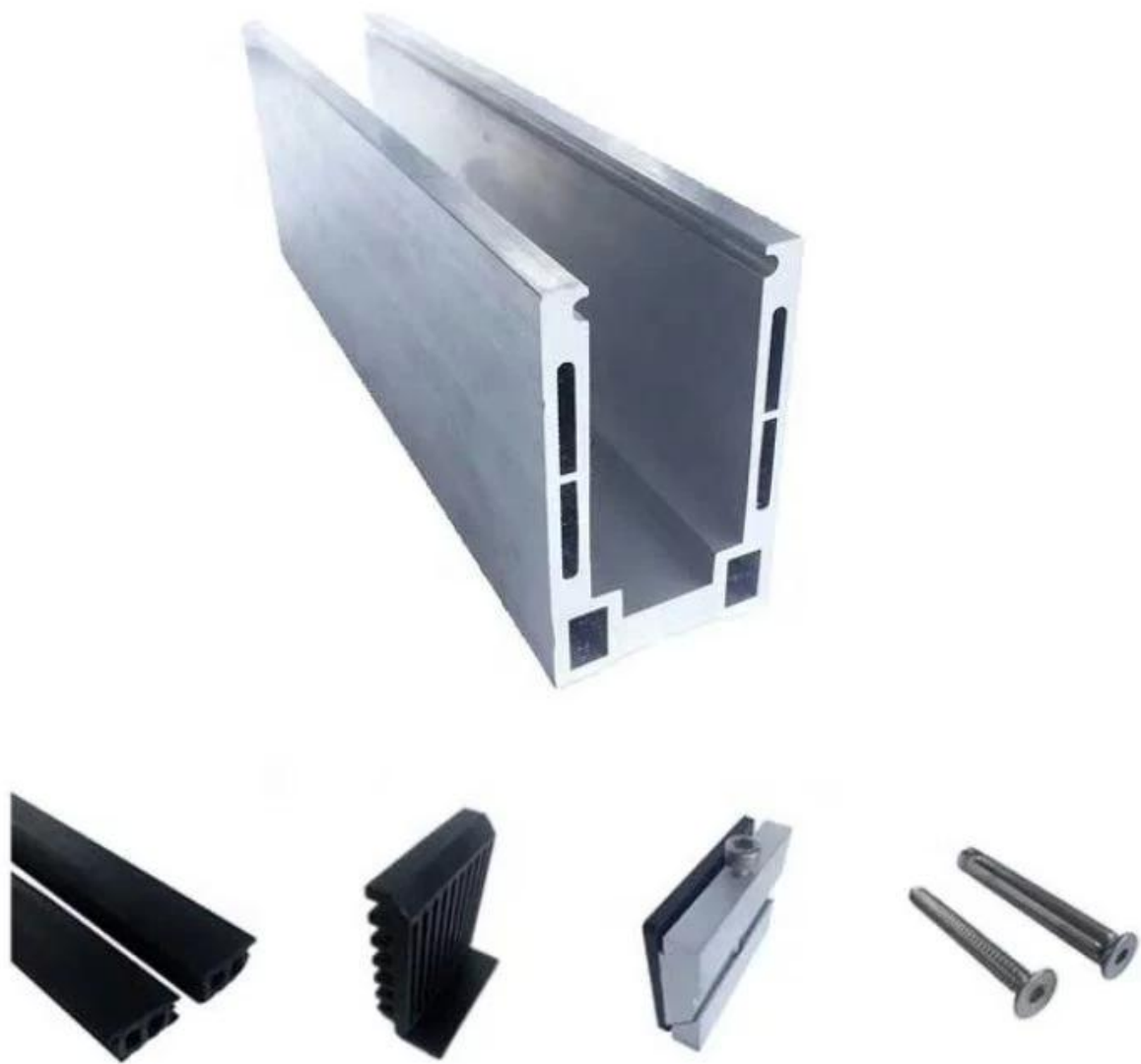
Canal de base de alumínio de design sólido

Acessórios: fita à prova d'água, acessórios de plástico e alumínio, parafusos de expansão



Canal de base de alumínio de design oco

Acessórios: fita à prova d'água, acessórios de plástico e alumínio, parafusos de expansão



Tipos de canal de base em U de alumínio

LCH-A01 / A02

LCH-A01



20 mm to 21.52 mm tempered glass

1 m aluminium groove contains the following accessories (excluding glass)



LCH-A02



20 mm to 21.52 mm tempered glass

1 m aluminium groove contains the following accessories (excluding glass)



LCH-B01 / B02

LCH-B01



16 mm to 17.52 mm tempered glass

1 m aluminium groove contains the following accessories (excluding glass)



LCH-B02



16 mm to 17.52 mm tempered glass

1 m aluminium groove contains the following accessories (excluding glass)



LCH-C01 / C02

LCH-C01



12 mm to 13.14 mm tempered glass

1 m aluminium groove contains the following accessories (excluding glass)



Aluminum trough 1 m Waterproof tape 2 meters



Aluminum plastic fittings 3 sets



Expansion screws 3 pieces

LCH-C02



12 mm to 13.14 mm tempered glass

1 m aluminium groove contains the following accessories (excluding glass)



Aluminum trough 1 m Decorative cover 2 meters



Aluminum plastic fittings 3 sets



Expansion screws 3 pieces

LCH-D01 / D02

LCH-D01



12 mm to 13.14 mm tempered glass

1 m aluminium groove contains the following accessories (excluding glass)



Aluminum trough 1 m Waterproof tape 2 meters



Aluminum plastic fittings 3 sets



Expansion screws 3 pieces

LCH-D02



12 mm to 13.14 mm tempered glass

1 m aluminium groove contains the following accessories (excluding glass)



Aluminum trough 1 m Decorative cover 2 meters



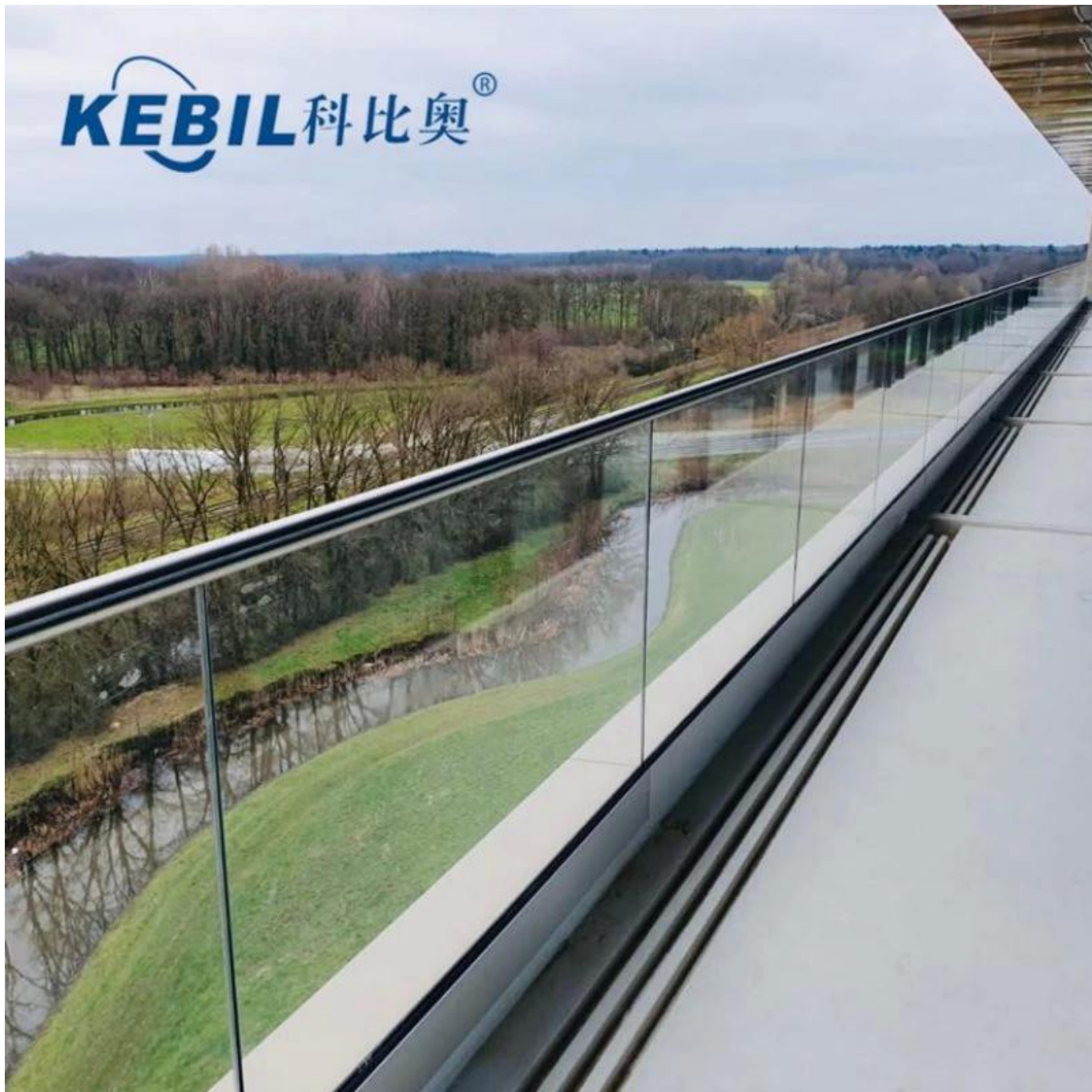
Aluminum plastic fittings 3 sets



Expansion screws 3 pieces

Desenhos de projeto

KEBIL 科比奥®





Todos os sistemas de canal U

U-Channel System



U-BASE CHANNEL

- Made of aluminum 6063 T5
- For use with 10-12mm glass
- 80x35mm
- 5.8m per length or as per your requirement



U-BASE CHANNEL

- Made of aluminum 6063 T5
- For use with 15-19mm glass
- 65.3x104mm
- 5.8m per length or as per your requirement



U-TOP CHANNEL

- Made of stainless steel 316L
- For use with 10-12mm glass
- ϕ 25.4mm
- 5.8m per length , or as per your requirement



U-TOP CHANNEL

- Made of stainless steel 316L
- For use with 10-12mm glass
- 25x20mm,
- 5.8m per length , or as per your requirement

Se você tiver alguma dúvida, não hesite em entrar em contato.

Frank Fang

Telefone / WhatsApp / Wechat: +8615906261741

Skype: lançamento-02

Email: sales02@launch-china.cn