

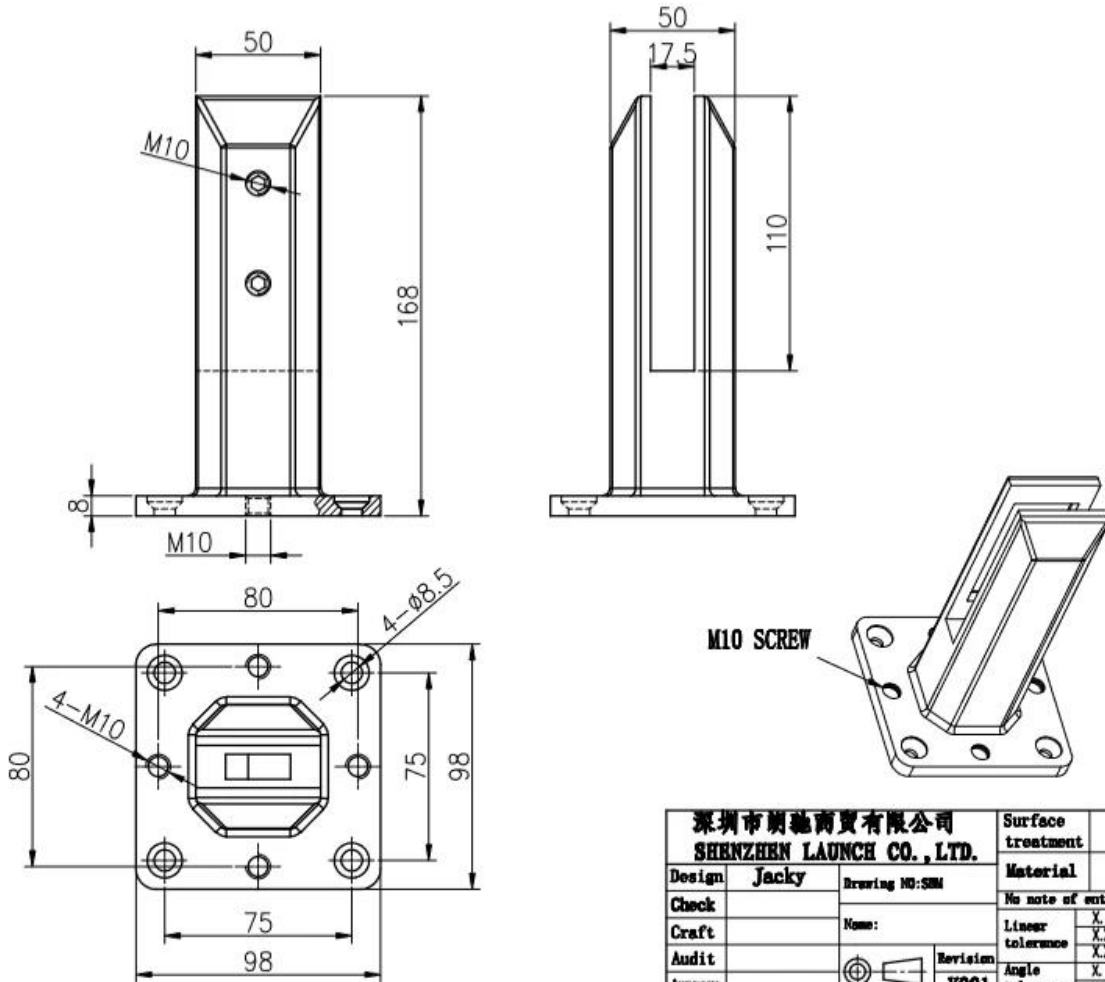
Trilhos de vidro sem moldura com duplex 2205 Spigots para 10mm a 13.52mm Painéis de vidro.

Nossa Spigot de vidro duplex 2205 ajustável é com 4 furos e parafusos extras na placa de base e 1 placa de nivelamento de PC a ser usada na parte inferior da torneira para ajustar o nível quando o solo não é mesmo.

1. Características do corrimão de vidro com espigas de vidro duplex 2205

Material de espigão Principal corpo	Duplex 2205.
Material para parafusos, tampa de base, placa de nivelamento	316 aço inoxidável
Terminar	Revestimento de pó preto fosco ou plaqueamento electro; cetim; espelho
Espessura de vidro	Vidro de espessura 10-13.52mm.
Altura	168mm; ou pode ser personalizado
Junta de plástico	Feito de material de nylon, pode durar tempo ao longo da vida
Parafuso concreto para se adequar	M8 * 100.
Peso Unitário por PC	1.45kg.
Em estoque	sim
MOQ.	2 pcs.

2. Dimensões de Sbm. vidro espigão



深圳市朗馳商貿有限公司 SHENZHEN LAUNCH CO., LTD.		Surface treatment	Proportion
Design	Jacky	Material	1:2
Check	Drawing NO: SM	No note of entity size tolerance	
Craft	Name:	Linear tolerance	X ±0.1
Audit	Revision	XX	±0.1
Approve	VOG1	Angle tolerance	X ±1°
			XX ±0.5°

3. Carregando teste & Material teste para SBM Duplex 2205. vidros pigão

LOADING TEST FOR SBM

Introduction

MTS Metallurgical Testing Services was engaged to witness the installation of a sample pool fence spigot and to subsequently conduct load tests on the spigot to the requirements of Australian Standard AS1926.1 - 2012.

Standard/Specification AS 1926.1 - 2012, Section 3.2 and Appendix B

Results Summary

(For details of individual tests, refer to the tables on the following pages.)

ID	Item/Heat No.	Dimensions/Type/Details	Finish	Overall Assessment
14117/01	SSRM316	70mm Square, Base Plate 316 Stainless steel	316l	COMPLIES

Remarks

After completion of the testing, the spigot was found to be in sound condition with no breakage, tearing or signs of fracture and no looseness of the fixings.



Colin Cousins
Metallurgical Testing Manager



Accreditation No: 15624
Accredited for compliance
with ISO/IEC 17025

Strength Test

Test Specification AS 1926.1 - 2012, Appendix B Test Procedure MTS-TP3.1 Compression Tests - Products

Specimen ID	Observations	Assessment
14117/01	Test Equipment: Hydraulic ram and 10,000 N load cell Test Load: 330N Load Duration: 45 Secs Deflection under load: 1 mm Permanent Deflection after removal of test load: 0 mm	COMPLIES

Requirements No permanent damage or loosening of fixings.



12/16/2020 5:54:18 PM

Method: Fe-30
 Comment: Cr-, Cr/Ni-steel
 Type Standard 18--8

12/16/2020 5:54:09 PM

Type corr.concentr.

Sample Name:

Sample ID:

	C	Si	Mn	P	S	Cr	Mo	Ni
	%	%	%	%	%	%	%	%
< x > (1)	0.0224	0.8873	1.1010	0.0263	0.0032	21.6796	3.0718	5.5691

	Al	Co	Cu	Nb	Ti	V	W	Pb
	%	%	%	%	%	%	%	%
< x > (1)	< 0.0005	0.0797	0.1603	< 0.0002	0.0044	0.0893	0.0305	< 0.0002

	Sn	Sb	B	N	Fe			
	%	%	%	%	%			
< x > (1)	0.0092	< 0.0004	0.0024	0.1024	67.1600			

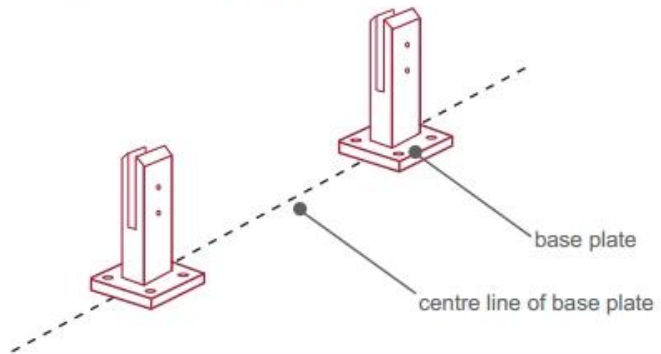
4.InstalaçãoInstruçõesparaSbm.vidroespigão



fixing method: base plate spigots

Mark out the centre line of proposed glass fence with a chalk line. Determine clamp location based on a sheet size (recommendation on pages 1 & 2). Use base plate as a template to mark out the hole positions and drill holes to suit.

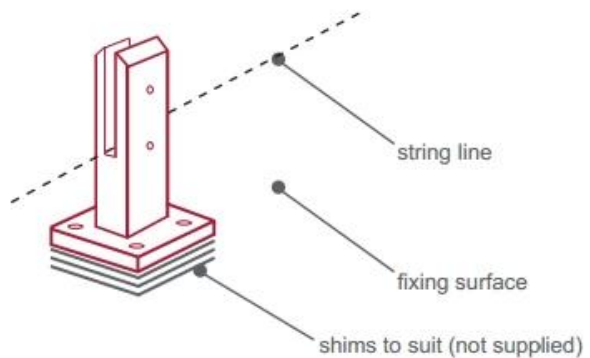
Note: Do not exceed 100mm gaps between glass panels. Optimum gap is 40mm to 60mm



Now the base plated spigots can be fitted to the floor and plumbed via shims (not supplied) under the base plates. Be sure to tighten firmly as the smallest of movement at the base plate will result in noticeable movement at the bottom of the glass fence.

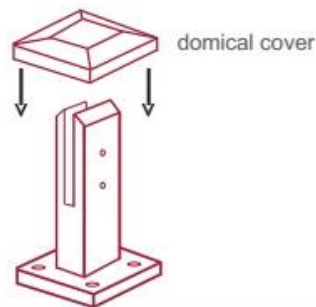
Tip: By setting the two outer spigots of your total span, a string line can be run in the 'throat' of the spigots, giving correct height for all spigots in between

Note: Do not exceed 100mm gap from the fixing surface to the bottom of the glass



When all spigots are installed, slip domical cover the top of the spigot to hide fixings. It will be necessary to turn the adjustment screws on the spigot face all the way in to allow cover to pass over

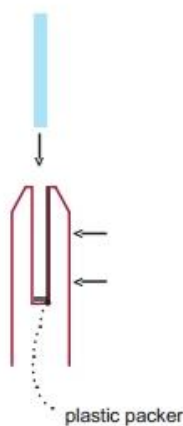
Note: Same installation method applies to round base plate spigot



The glass is then installed to the spigots. Place plastic packers between glass & spigot, at no stage should glass touch the metal

How adjustability works:

1. Place glass in spigot
2. Fix/ tension glass both sides with allen key

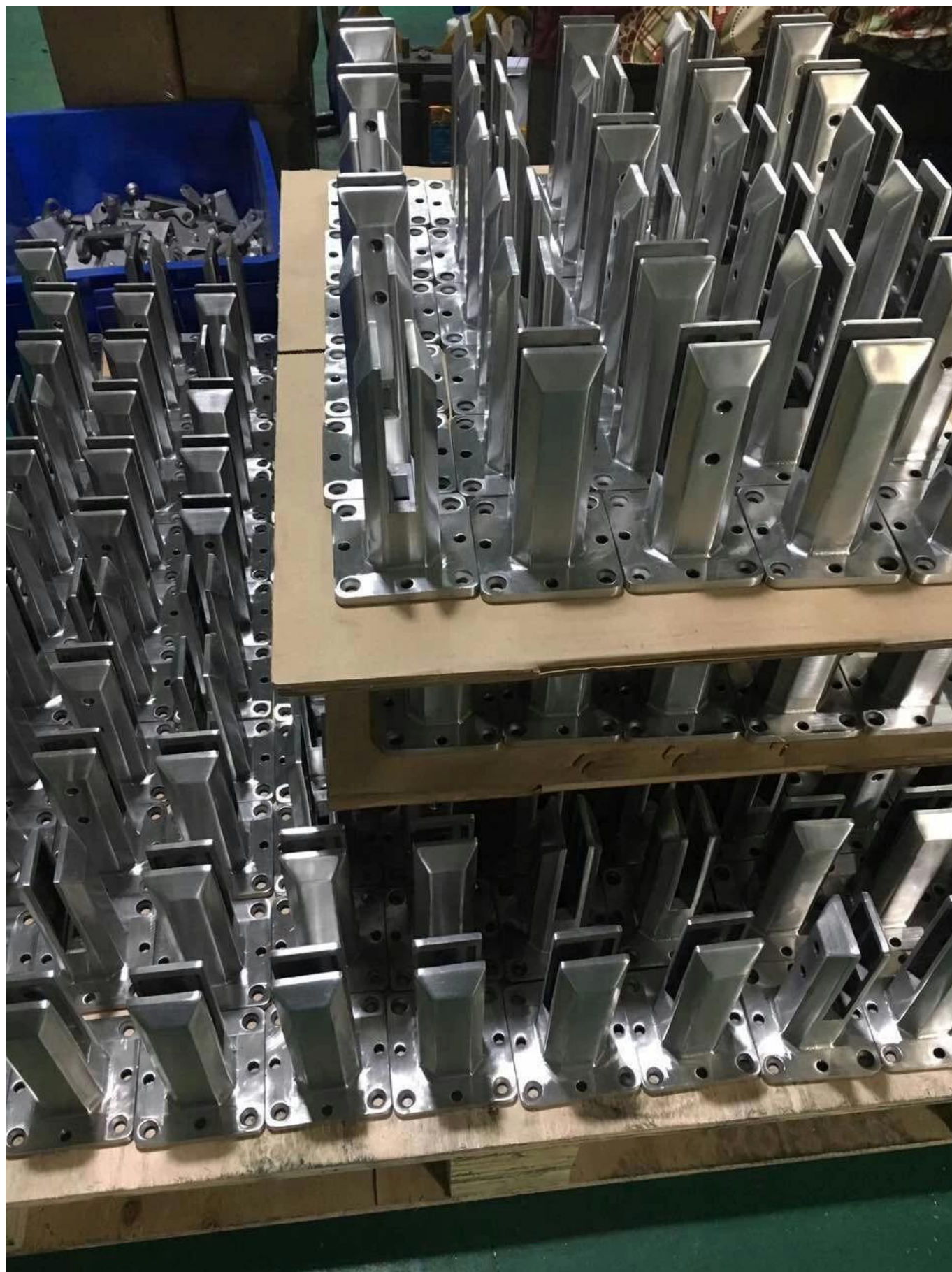


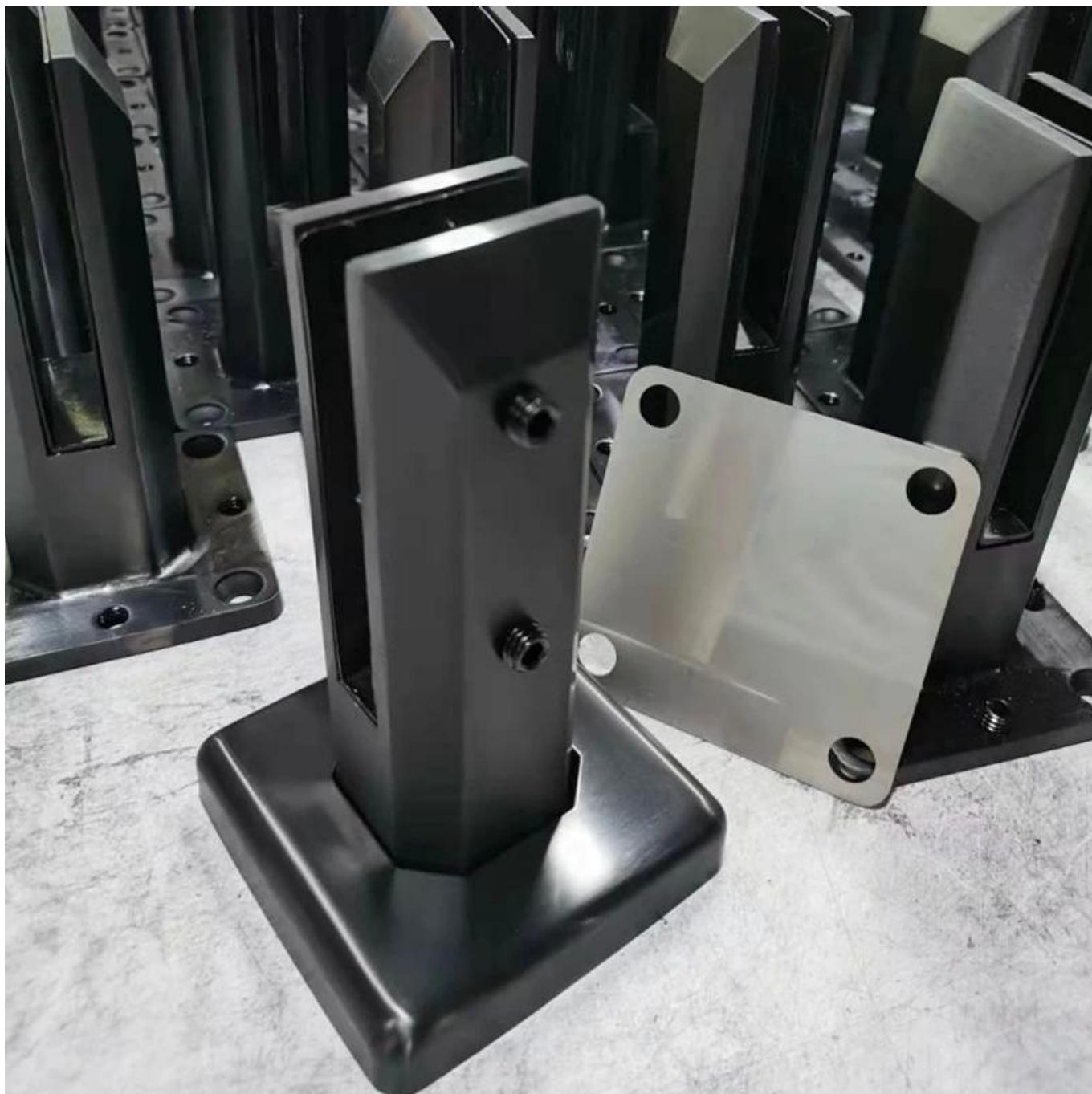
5.EmbalagemdetalhesparaSbm.Spigots de vidro duplex 2205

1 pc em uma caixa branca; 12 pcs em uma caixa



6. Massa Produção Processar para Sbm. vidro espigão-





7. Mais Modelos de vidro espigão para sua seleção-





MODEL # SBM



MODEL # SCM



MODEL # RBM



MODEL # RCM

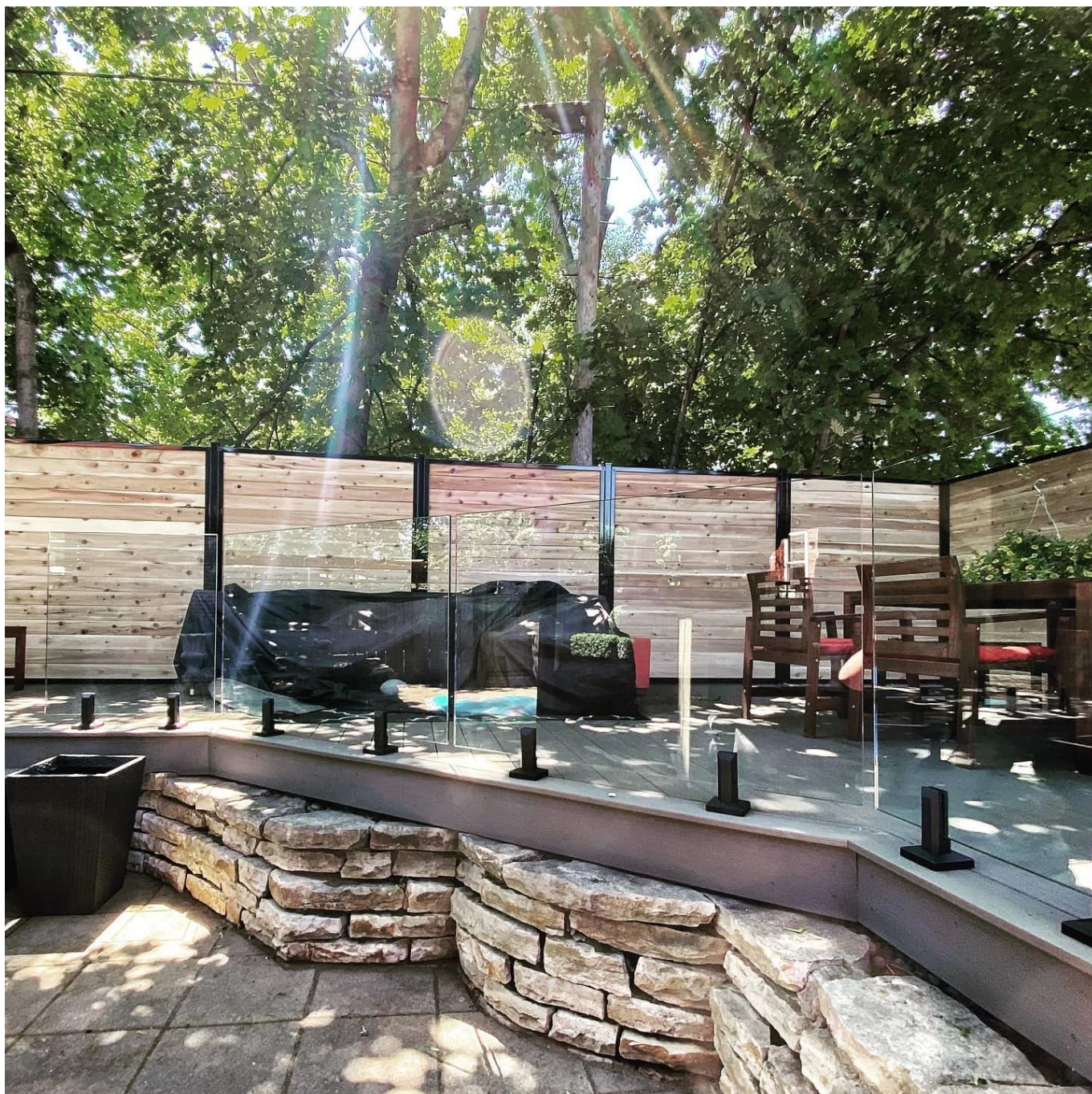
Glass spigot

8.ProjetoFotosdeSem molduraVidroRailings.comvidroSpigots.-









Nós também temos dobradiça de vidro e travas magnéticas e braçadeiras de vidro e vidro temperado para ir com todo o sistema de trilhos de vidro sem moldura.

Sinta-se à vontade para nos contatar agora para obter cotações!

Shenzhen lançamento Co., Ltd

Verificado por SGS, Relatório No. 19536352_P + T

Office Adicionar:

B5-003, 5 / F-bloco 3, Edifício Yilida, No. 1092 Nanshan Road, Distrito de Nanshan, Shenzhen, China, Código Postal 518054

Tel: 86-755-86037559 Fax: 86-755-86372611

Mob (WhatsApp, Wechat, Viber) +86 135 9027 3543

Contato:CeliaChen.