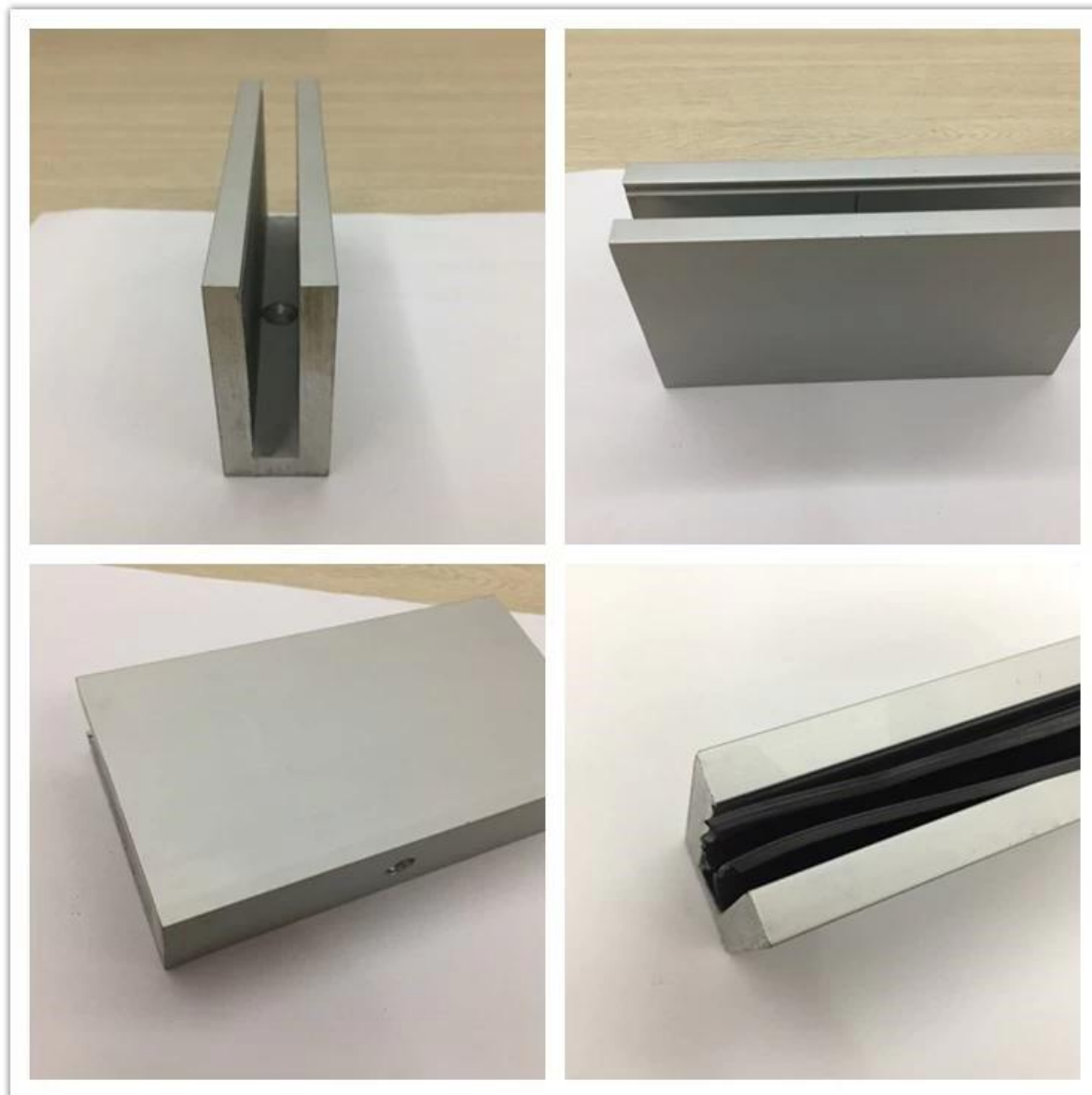


O terraço interno do balcão da venda quente moderou o perfil de alumínio dos trilhos de vidro / canaleta de U para os trilhos de vidro



Especificações do perfil do canal de alumínio U:

Item	Trilhos de vidro moderados de alumínio do balcão da canaleta em U, balaustrada do vidro da canaleta em U
Material	Alumínio 6063 T3
Terminar	Anodize / pó revestido
Tamanho	35 * 80mm / 63.5 * 104mm etc
Espessura do vidro	12 mm a 25 mm
Tipos de tubo de slot	Redondo ou quadrado
Instalação	auto-roscagem / parafusos de explosão / parafusos
Montagem	montagem no chão / montagem na parede
Aplicação	varanda, deck, varanda, escada, terraço, lobby, shopping

Entrega

15-30 dias

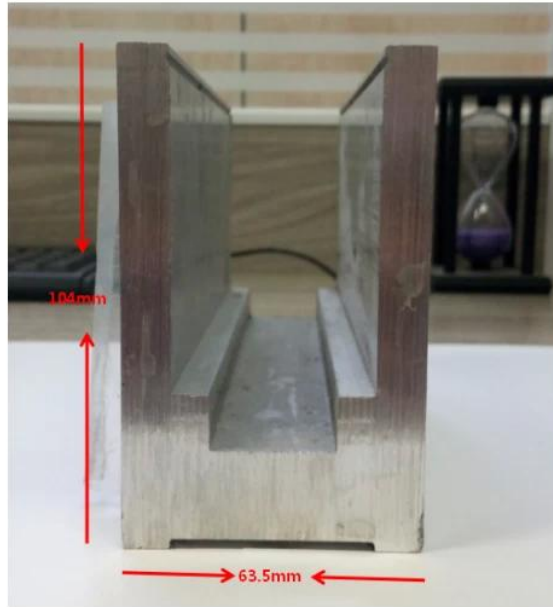
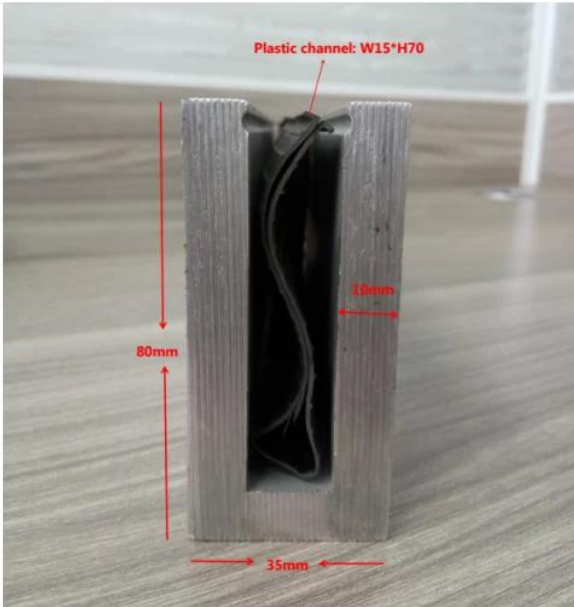
Para aplicações comerciais e residenciais
Para atacado e varejo (Nós somos fabricante)



SMALL & GRANDE TIPO DE ALUMÍNIO U CANAL PARA VIDRO DE VIDRO:

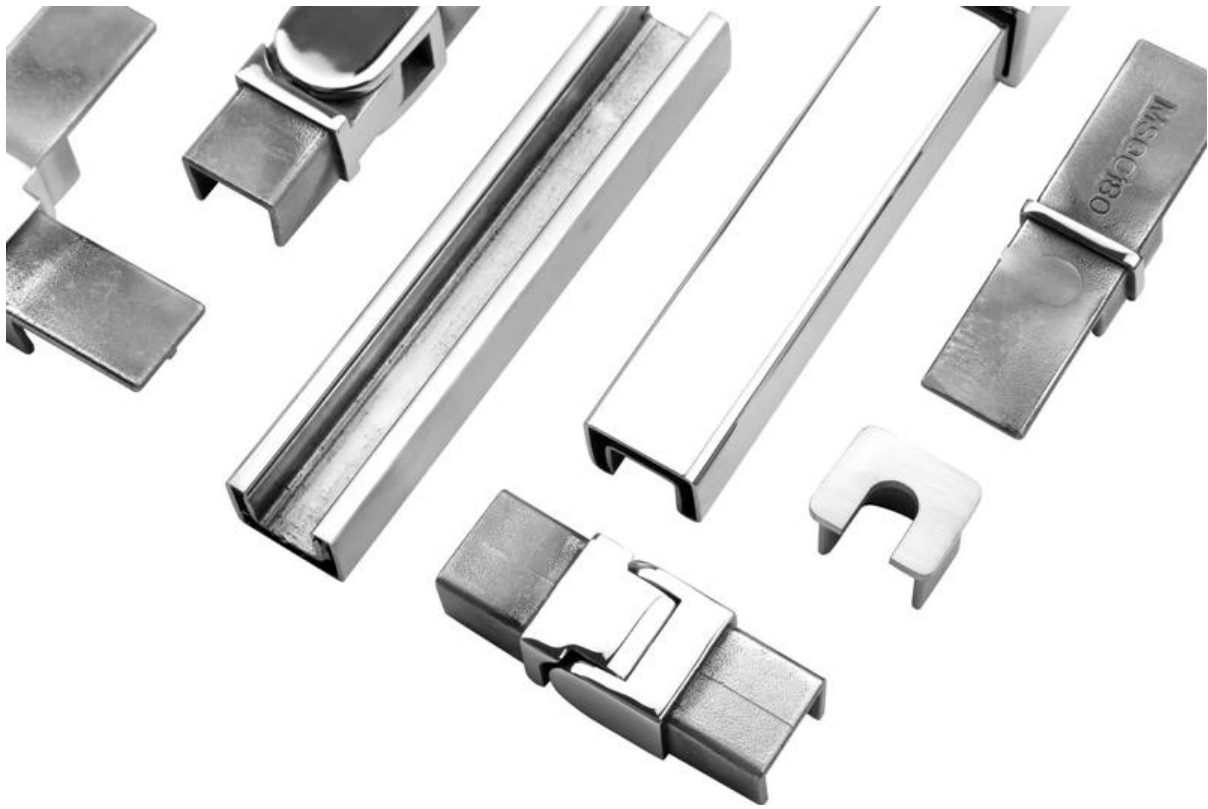
Small profile: for glass thickness 10-12.76mm

Big profile: for glass thickness 20-30mm



SLOT TUBE HANDRAIL:

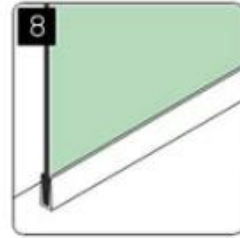
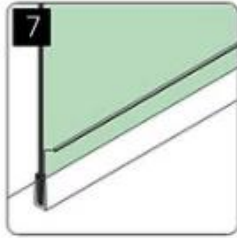
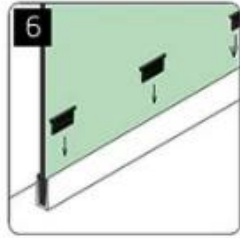
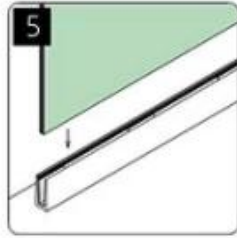
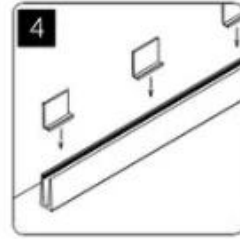
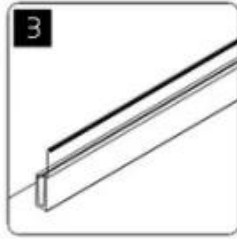
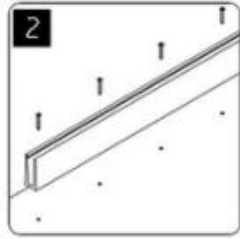
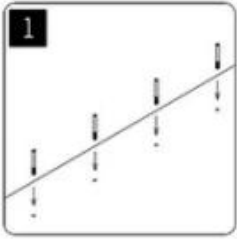




KEBIL 科比奥®



installation



Shenzhen Launch Co., Ltd was established in 2004, located at Nanshan District, Shenzhen, and one hour by car from Hongkong International Airport. Our main product is high-grade building materials includes stainless steel balustrade post, staircase handrail, balcony guardrail, swimming pool fence and other high-grade building materials. All the products are designed strictly according to the high-end market requirements. We have our own factory in Tangxia Town, Dongguan, has a variety of precision equipment more than 50 sets: CNC lathe, milling machine, punching machine, pipe cutter, argon welder, drilling machine, polisher, etc. which can provide customers with complete product processing services. With the German SPECTRO Spectrometer, we insist on testing every batch of materials to ensure that the material is highly qualified. We also have hardness gauge, secondary element and other test equipment to ensure the products meets customers' requirements.

ABOUT US



OUR ADVANTAGE

Please do not hesitate to contact us if you have any requirement regarding our production lines, you can expect a timely reply with professional solutions!



Own factory, shortest lead time.



Can help customers design product drawings based on customer ideas and design engineering installation drawing according to the customer site sketch.



Sample order, trial order acceptable.



Provide material test report to ensure that the material is qualified.



13 years of industry experience, we can help customers recommend the best solution to help customers save cost.

OUR FACTORY

More than 13 years experience in hardware industry design and processing, we can provide customized services from design to the sample and small batch trial production.



OUR CERTIFICATE

With premium quality, competitive price and superior service, we won a lot of customers' favor.
Our products are popular in North America, European and Australia.



PRODUCTION PROCESS



Casting



CNC lathe



CNC Milling



Stamping



Drilling & Tapping

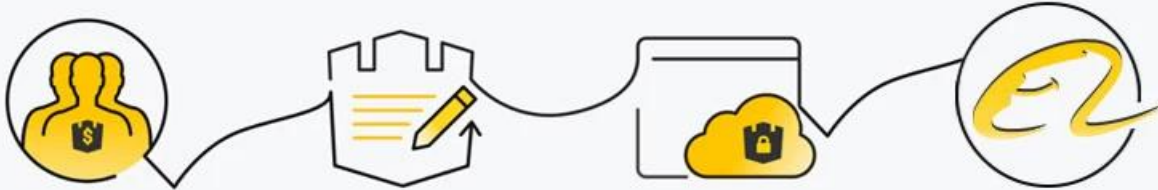


Polishing



PAYMENT & TRANSPORTATION

Welcome Alibaba Trade Assurance Order!



1 Start an order

2 Negotiate terms with our sales service & confirm order

3 Make payment

4 Alibaba provide full assurance



PayPal



VISA

HSBC



XPL FedEx[®]
Express

EMS[®]

DHL

TNT



Perguntas frequentes

1. você é de fábrica?

Sim, nós somos fábrica.

2. Você oferece amostras grátis?

Sim, nós oferecemos amostras grátis, mas os clientes precisam pagar taxas expressas.

3. Quais materiais você tem?

Temos o material de aço inoxidável 304, 316, 316L e Duplex 2205.

4. qual é o seu MOQ?

MOQ de ordem necessária é de 1 pc.

5. Que tipo de pagamento você aceita?

Nós aceitamos o pagamento de T / T, LC, PayPal, União ocidental, etc.

6. Qual é o seu prazo de pagamento?

Nosso prazo de pagamento é T / T (100% ou 30/70) ou LC na vista.

7. Qual é o seu tempo de entrega?

Nosso tempo de entrega é de 5 dias a 30 dias base em sua quantidade.

8. Você oferece OEM & Serviço do ODM?

Sim nós oferecemos o serviço de OEM e ODM.

9. Você oferece serviço pós-venda?

Sim, nós oferecemos o serviço pós-venda. Qualquer reclamação para encomendas será tratada dentro do prazo de 12 horas.

Contacte-nos agora para mais informações:

véspera

Email: sales03@launch-china.cn

Celular / Whatsapp: +8615907334556