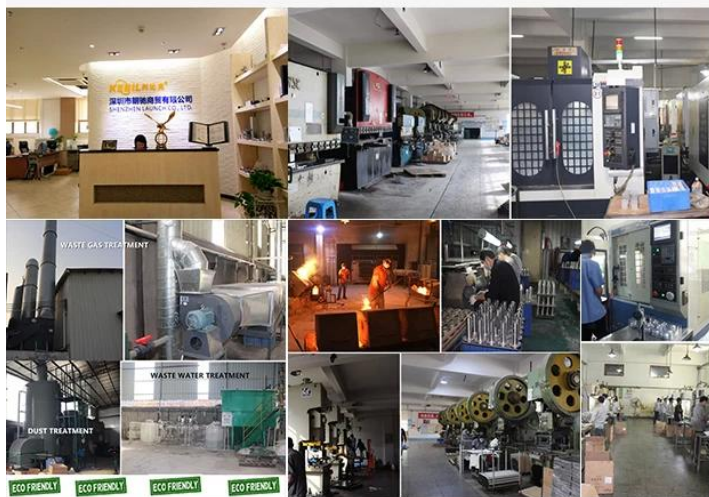


## **SOBRE NOS:**



## **ABOUT US**

Shenzhen Launch Co., Ltd was established in 2004, located at Nanshan District, Shenzhen, and one hour by car from Hongkong International Airport. Our main products are high-grade building materials including stainless steel balustrade post, staircase handrail, balcony guardrail, swimming pool fence and other high-grade building materials. All the products are designed strictly according to the high-end market requirements. We have our own factory in Tangxia Town, Dongguan, with more than 50 sets of various precision equipments, such as CNC lathe, milling machine, punching machine, pipe cutter, argon welder, drilling machine, polisher, etc. which can provide customers with complete product processing services.



### **15 YEARS EXPERIENCE**

We have been manufacturing railing hardwares since 2004.



### **ONE STOP SERVICE**

We provide integrated railing solutions.  
We manufacture.  
We deliver.



### **PROFESSIONAL R&D TEAM**

We have engineering experts for developing new products.



### **TOP QUALITY & GOOD PRICE**

We are strict on quality control as well as cost evaluation.

## **Torneira de aço inoxidável da escada de vidro dos trilhos do projeto de Moden com a braçadeira de vidro gêmea:**

Modelo Número:LCH-115

Montado:Pavimentos

Posição:Trilhos da plataforma / corrimãos, trilhos da escada / corrimãos

Nome do Produto:Torneira de aço inoxidável da escada de vidro dos trilhos com a braçadeira de vidro gêmea

Inscrição:Esgrima sem moldura e balaustrada

Tipo:Posição livre

Uso:Construção de balaústre

Terminar:Cetim / Espelho polido / Preto

Instalação:Montado no chão

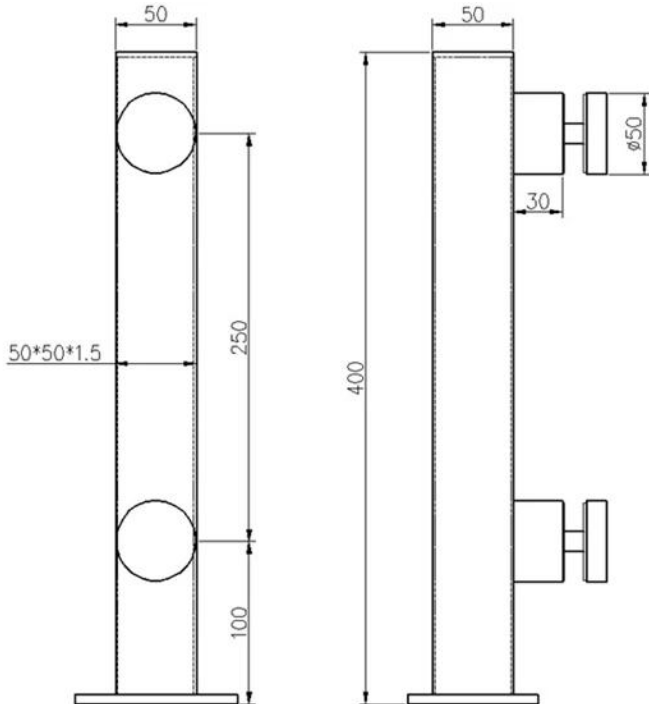
Padrão:Padrão da Austrália AS 1926.1-2012

Espessura do vidro:8/10/12 / 10.76 / 12.76 / 13.14 / 13.52mm

OEM & ODM:Aceitável

Material:SS316 / 316L / DUPLEX2205

**KEBIL** 科比奥®









**Entre em contato conosco para mais detalhes:**  
**[sales03@launch-china.cn](mailto:sales03@launch-china.cn)**

**HP / WhatsApp / WeChat: +8615907334556**