

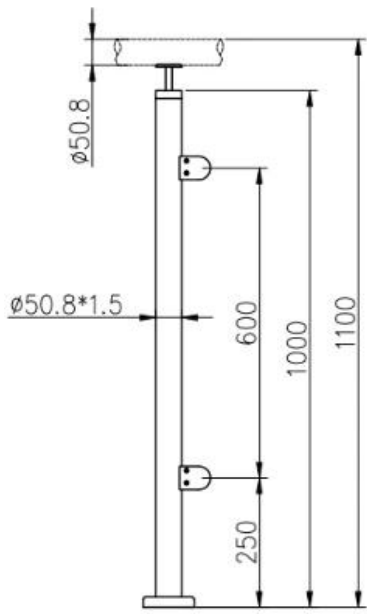
Modern Exterior Corrimão Corrimão Laminado Deck Varanda Vidro Trilhos Design



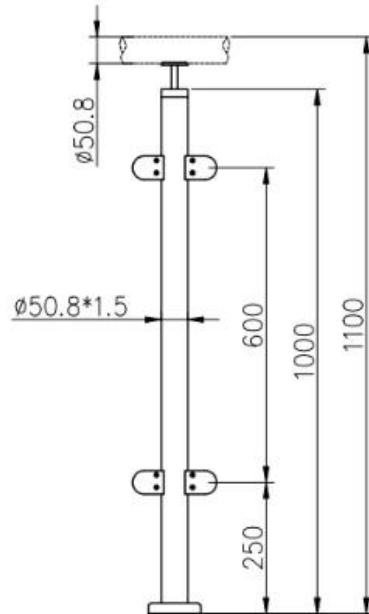
1	Material e Acabamento	Aço inoxidável 304/316; Acabamento acetinado ou espelhado
2	Altura	1000MM / tamanho personalizado
3	Stanchion Post	Tubo D50.8 * 1.5 (mm); Suporte de trilho superior ajustável de 4 vias; Braçadeira de vidro quadrada ou redonda.
4	Trilho superior	D50.8 * 1.5 (mm) tubo oco
5	Trilhos de segurança	Painel de vidro claro moderado 10mm / 12mm
6	Uso e Localização	Balaústre, balaustrada, corrimão, cerca, corrimão, trilhos; Varanda, Ponte, Convés, Jardim, Pátio, Piscina, Alpendre, Escada, Terraço
7	Instalação	Montagem superior / lateral
8	Pacote	EPE + caixa interna + caixa



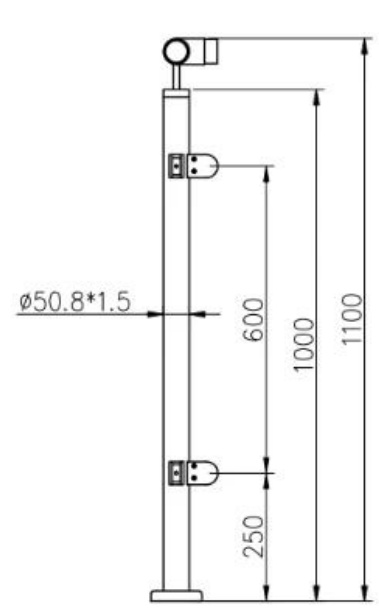
**LCH-106**



**LCH-107**



**LCH-108**



Instalação:

## Glass Clamp Installation Guide



Mark and centre punch desired location of blind rivet nut location.



Drill centre punched hole in tube to suit blind rivet nut.



Insert blind rivet nut into tube and fasten with blind rivet tool.



Check installed blind rivet nut is secure and ready for install.



Align half glass clamp with blind rivet nut inline position. Screw in button head cap screw into thread and tighten with hex key.



Select appropriate rubber gasket to suit glass panel thickness. Install rubber gasket into both sides of glass clamp. (Note rubber gasket marked with sizes).



If heavier clamping load is required please use supplied glass clamp pin, during the install process. Note glass panels will require drilling in order to fit glass clamp pins.



Fit glass panel into position, install second half of glass clamp secure with provided hex screws.



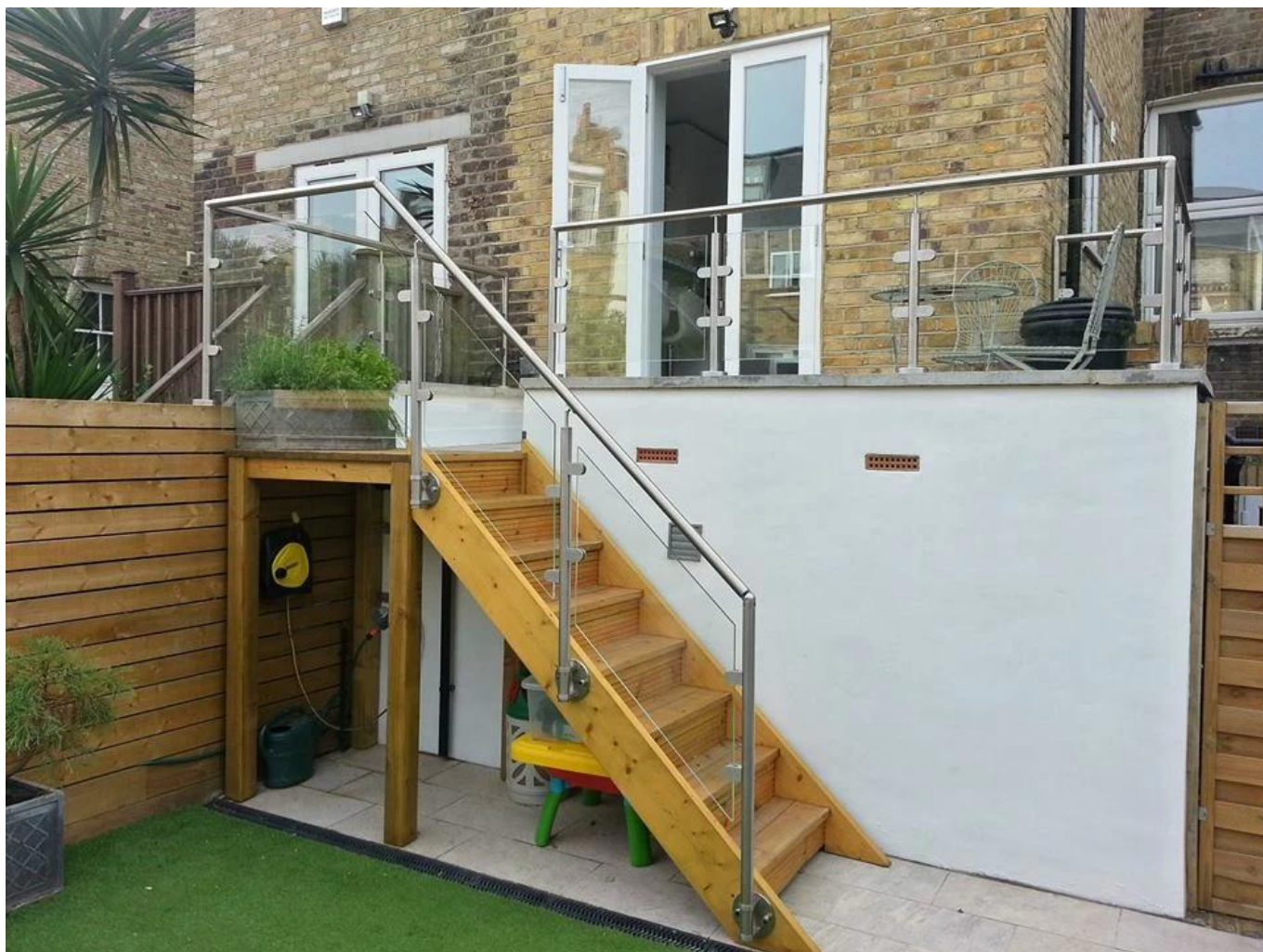
Tighten glass clamps with hex key, and check glass panel are secure with no movement.

Mostra do projeto



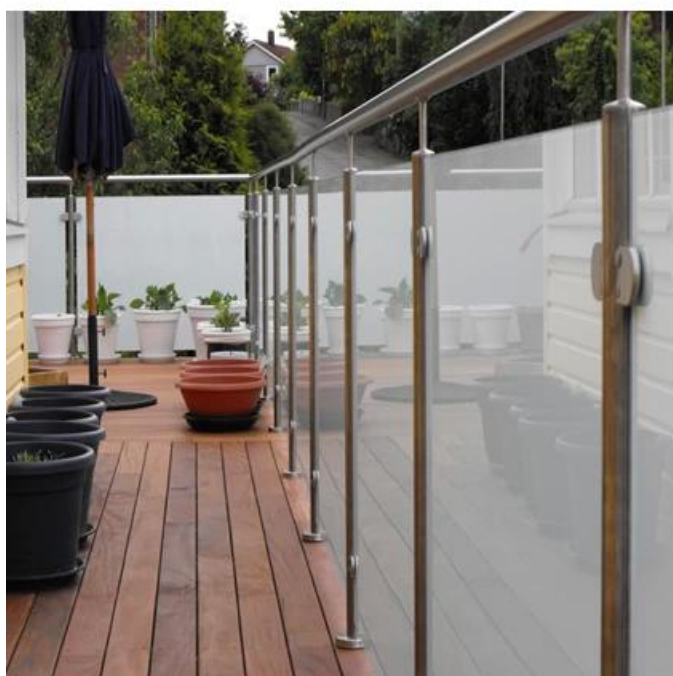
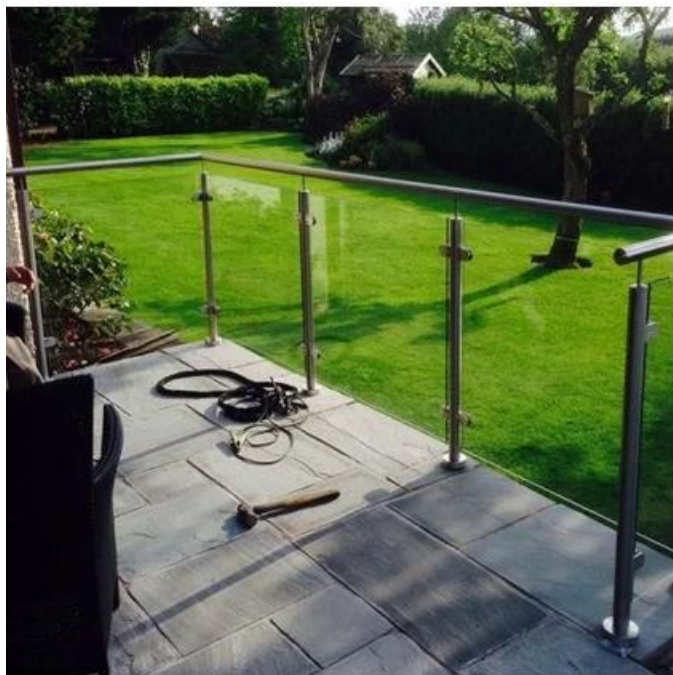






Para sacada corrimão projetos:





**Bem-vindo ao contato nos:**  
**Eve Chow**  
**[sales03@launch-china.cn](mailto:sales03@launch-china.cn)**  
**HP / WhatsApp / WeChat: +8613686807796**