

## **Acabamento de ouro polido Prensas de vidro, espigões de trilhos de vidro de cor dourada**

### **Torneira de segurança em aço inoxidável**

1. Grau: SUS316, SUS316L, DUPLEX2205
2. Espessura do vidro: 10mm - 13.52mm
3. Acabamento: cetim escovado ou polido espelho
4. Certificação: ISO9001, CCC

Material: aço inoxidável

Número do modelo: SBM

Tipo: Quadrado

Montado: Pavimento

Aplicação: Frameless Fencing & Balaustrada

Produtos Mostrar:

Polido em cor dourada:



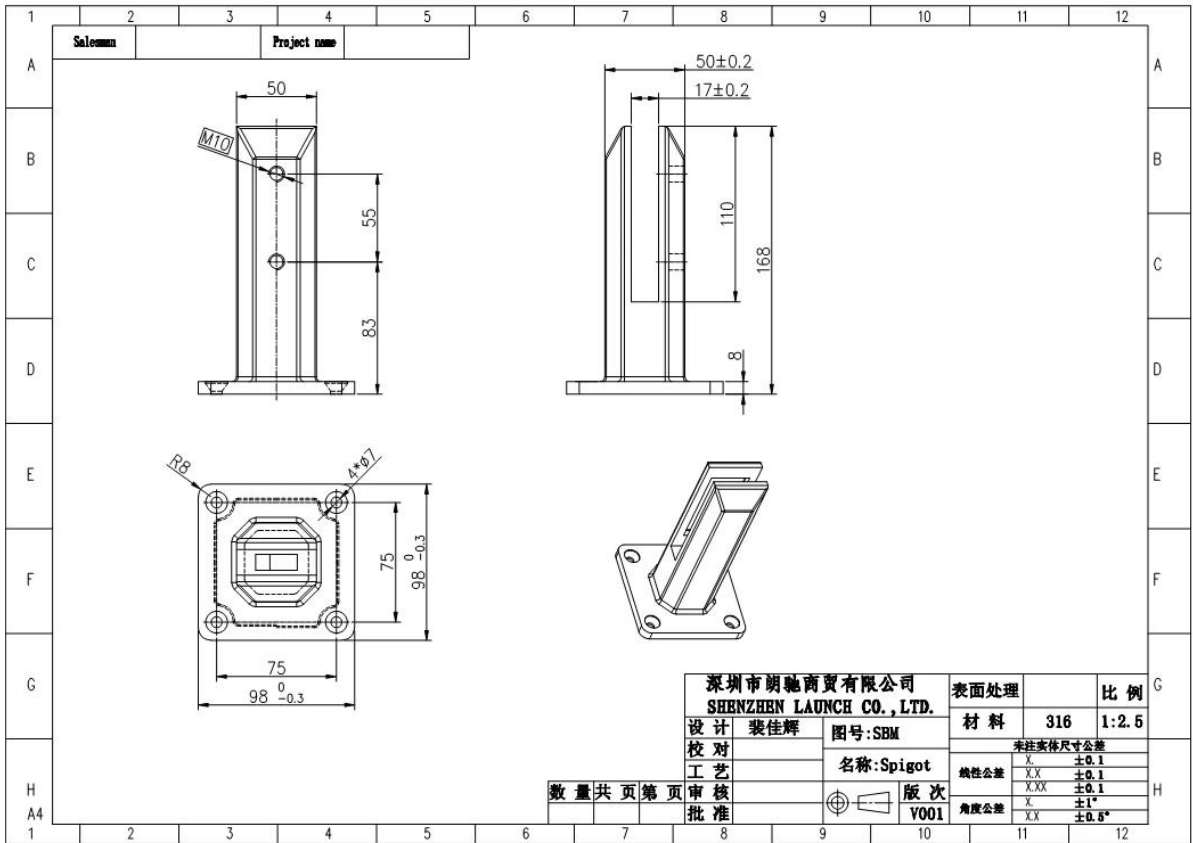
Cetim-escovado:



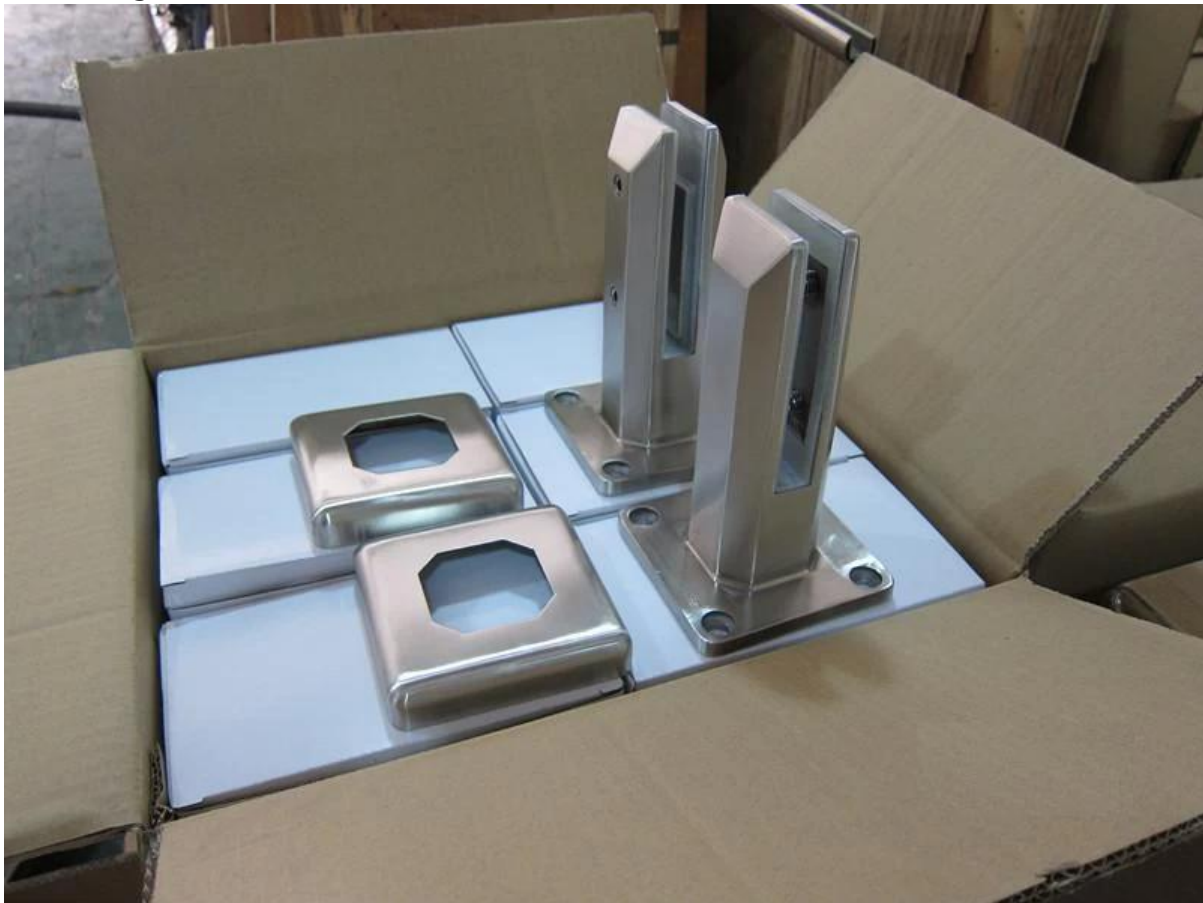
Espelho polido:



Desenhando:



Embalagem:



Fotos do projeto:

SBM no acabamento do espelho:





SBM em acabamento acetinado:



Shenzhen Launch Co., Ltd é uma fabricação profissional com design, produção e vendas de hardware de aço inoxidável, acessórios para trilhos de vidro, acessórios de corrimãos e

outros produtos.

#### PORQUE ESCOLHER-NOS

Preço competitivo: fabricação continental da China

Boa qualidade: 14 anos de experiência técnica

Excelente serviço: 14 anos de experiência de exportação em todo o mundo

Diferentes desenhos estão disponíveis de acordo com os pedidos dos clientes



Shenzhen Launch Co., Ltd was established in 2004, located at Nanshan District, Shenzhen, and one hour by car from Hongkong International Airport. Our main product is high-grade building materials includes stainless steel balustrade post, staircase handrail, balcony guardrail, swimming pool fence and other high-grade building materials. All the products are designed strictly according to the high-end market requirements. We have our own factory in Tangxia Town, Dongguan, has a variety of precision equipment more than 50 sets: CNC lathe, milling machine, punching machine, pipe cutter, argon welder, drilling machine, polisher, etc. which can provide customers with complete product processing services. With the German SPECTRO Spectrometer, we insist on testing every batch of materials to ensure that the material is highly qualified. We also have hardness gauge, secondary element and other test equipment to ensure the products meets customers' requirements.

## ABOUT US





# OUR ADVANTAGE

Please do not hesitate to contact us if you have any requirement regarding our production lines, you can expect a timely reply with professional solutions!



Own factory, shortest lead time.



Can help customers design product drawings based on customer ideas and design engineering installation drawing according to the customer site sketch.



Sample order, trial order acceptable.



Provide material test report to ensure that the material is qualified.



13 years of industry experience, we can help customers recommend the best solution to help customers save cost.

# OUR FACTORY

More than 13 years experience in hardware industry design and processing, we can provide customized services from design to the sample and small batch trial production.



# OUR CERTIFICATE

With premium quality, competitive price and superior service, we won a lot of customers' favor.  
Our products are popular in North America, European and Australia.



# PRODUCTION PROCESS



Casting



CNC lathe



CNC Milling



Stamping



Drilling & Tapping



Polishing





# PAYMENT & TRANSPORTATION

Welcome Alibaba Trade Assurance Order!



1 Start an order

2 Negotiate terms with our sales service & confirm order

3 Make payment

4 Alibaba provide full assurance



PayPal



VISA

HSBC



XPL FedEx Express

EMS

DHL

TNT



## Embalagem & Entrega

Detalhes de empacotamento :

1. Cada espiga é enrolada com película de plástico e airbag, e depois coloque um cartão.
2. 100 espigões são embalados em um caso de madeira compensada.
3. Também podem ser embalados como requisitos dos clientes.

Detalhes da entrega: 10-15 dias úteis após o pagamento.



Entre em contato agora para obter mais informações!

E-mail: [sales03@launch-china.cn](mailto:sales03@launch-china.cn)

Celular: +8615907334556

**KEBIL** 科比奥® SHENZHEN LAUNCH CO.LTD  
LAUNCH INTERNATIONAL LIMITED

**Eve Chow**

Sales representative

M : +86 159 0733 4556

T : +86 755 8603 7559

E : [sales03@launch-china.cn](mailto:sales03@launch-china.cn)

A : B5-5003, Yilida Bldg, Nanshan District, Shenzhen