

Shenzhen Launch é um fornecedor confiável de material de construção de metal desde 2004, nós também somos o Fornecedor de Ouro nos últimos 16 anos confirmado pela SGS conforme o relatório de verificação abaixo.

COMPANY INTRODUCTION

Verification Type:

Supplier Assessment

Onsite Check

Country / Region:
Guangdong, China ✓

Year Established:
2004 ✓

Main Products:
CNC Machining Parts,Stamping Pa... ✓

Main Markets:
North America, Oceania, Mid East... ✓

Total Annual Revenue:
confidential ✓

Total Employees:
11 - 50 People ✓

Alibaba.com Gold Plus Supplier

Main Product Lines Verification Report

Presented to

Shenzhen Launch Co., Ltd.

深圳市朗驰商贸有限公司

| | |
|-----------------------------|--|
| Company Address | B5003, Building 3, Yilida Building, No. 1092 Nanshan Avenue, Dengliang Community, Nanshan Street, Nanshan District, Shenzhen City, Guangdong Province, China |
| Consigner of Assessment: | Alibaba |
| Gold Supplier Member ID: | launch168 |
| Gold Supplier Company Name: | Shenzhen Launch Co., Ltd. |
| Contact Person: | Mr. Binfeng Gao |
| Phone Number: | 0086-13802569770 |
| Fax Number: | 0086-755-86372811 |
| Email: | gbf990@china.com |
| Website Address (URL): | http://launch-china.en.alibaba.com |

Service Provided by SGS

Report No.: 19536352_P+T

Alibaba.com Gold Plus Supplier

Verified

Assessment Report

Presented to

Cooperation Company of Shenzhen Launch Co., Ltd.

深圳市朗驰商贸有限公司合作工厂

| | |
|--|--|
| Gold Supplier & Assessed Company Relationship: | <div><div><input type="checkbox"/> Self-owned</div><div><input type="checkbox"/> Wholly Owned</div><div><input type="checkbox"/> Shareholder/Partner</div><div><input type="checkbox"/> Kindred between Owners</div><div><input checked="" type="checkbox"/> Cooperation Partner</div></div> |
| Company Address | Confidential |
| City / Country: | Huizhou / China |
| Consigner of Assessment: | Alibaba & Shenzhen Launch Co., Ltd. |
| Gold Supplier Member ID: | launch168 |
| Gold Supplier Company Name: | Shenzhen Launch Co., Ltd. |
| Contact Person: | Confidential |
| Phone Number: | Confidential |
| Fax Number: | Confidential |
| Email: | Confidential |
| Website Address (URL): | http://launch-china.en.alibaba.com |

Service Provided by SGS

Report No.: 19552720_P

WHY CHOOSE US



15 YEARS EXPERIENCE

We have been manufacturing railing hardware since 2004.



ONE STOP SERVICE

We provide integrated railing solutions.
We manufacture.
We deliver.



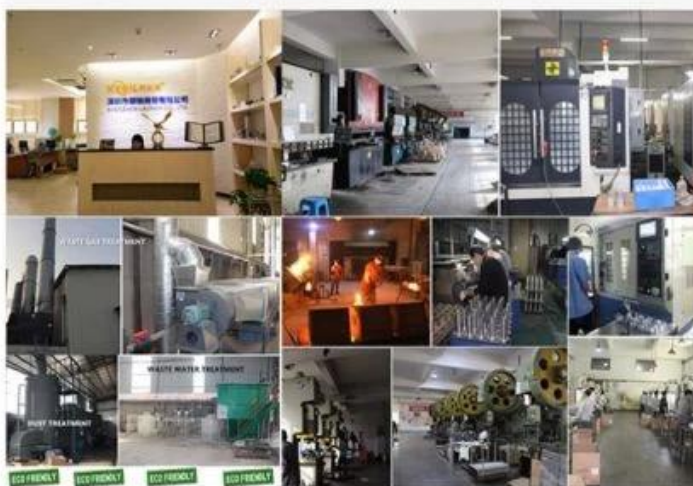
PROFESSIONAL R&D TEAM

We have engineering experts for developing new products.



TOP QUALITY & GOOD PRICE

We are strict on quality control as well as cost evaluation.



ABOUT US

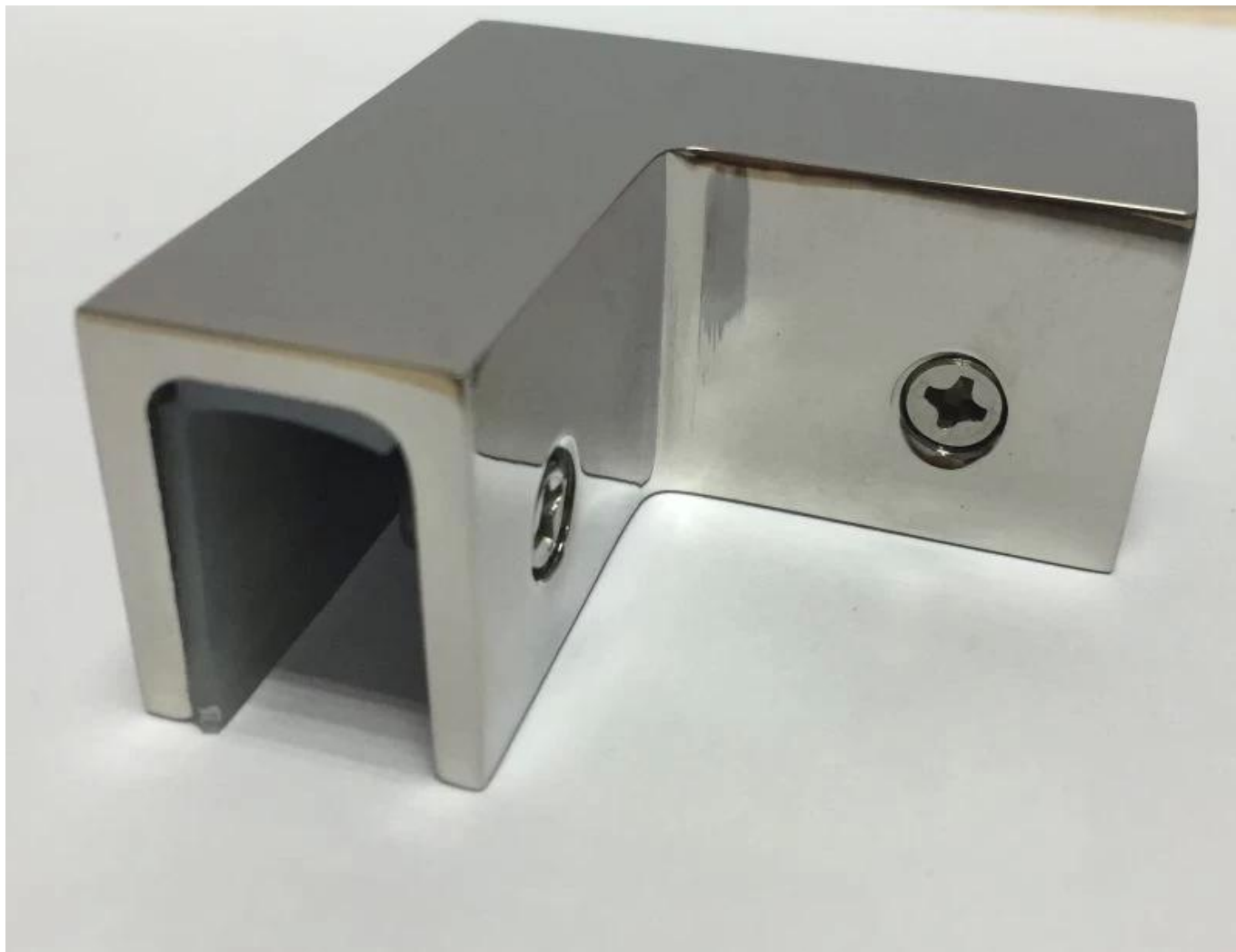
Shenzhen Launch Co., Ltd was established in 2004, located at Nanshan District, Shenzhen, and one hour by car from Hongkong International Airport. Our main products are high-grade building materials including stainless steel balustrade post, staircase handrail, balcony guardrail, swimming pool fence and other high-grade building materials. All the products are designed strictly according to the high-end market requirements. We have our own factory in Tangxia Town, Dongguan, with more than 50 sets of various precision equipments, such as CNC lathe, milling machine, punching machine, pipe cutter, argon welder, drilling machine, polisher, etc. which can provide customers with complete product processing services.

Especificações do produto

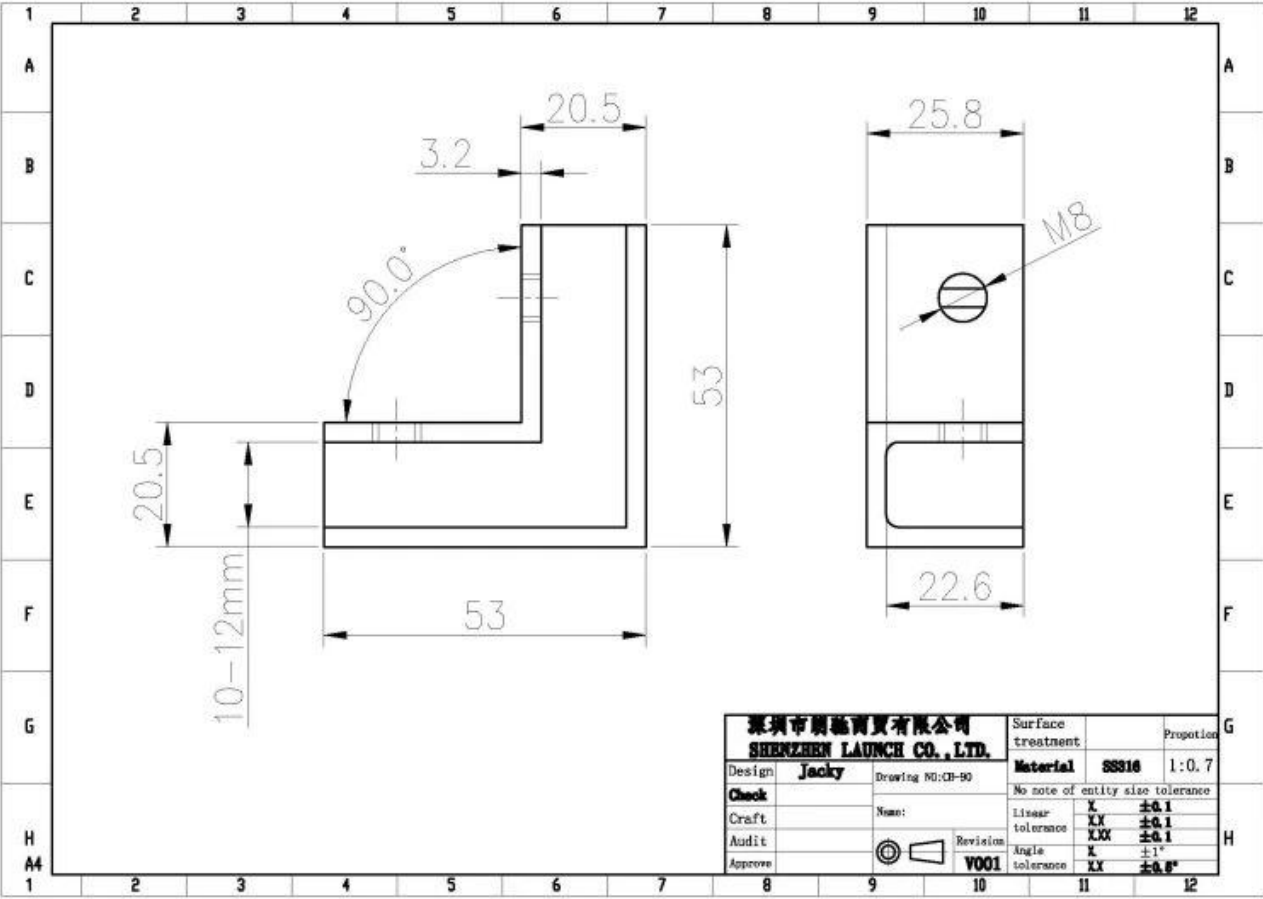
| | |
|--------------------------|--|
| Nome do Produto | Braçadeira de vidro de canto de 90 graus |
| Modelo No. | CB-90 |
| Material | 304SS / 316SS |
| Acabamento de superfície | Satin / Mirror / Matt Black |
| Tamanho | 52 * 52 * 25 mm |
| Para espessura de vidro | 8-12mm |

Mostra de Produto





Desenho técnico



Outros tipos de braçadeira de vidro



G102



G103/G104



G105



G108R



PV-90



CB-180



BC-60



BC-80x35

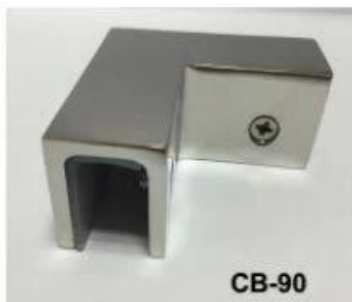


CB-90



BC-80x35

- Square 80x35mm clamps
- To hold **180°** glass panels
- For 8-12mm glass



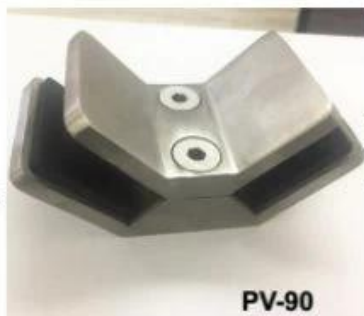
CB-90

- Corner glass clamp
- To hold **90°** glass panels
- For 8-12mm glass



BC-60

- Round $\phi 60$ mm clamps
- To hold **180°** glass panels
- For 8-12mm glass



PV-90

- Corner glass clamp
- To hold **90°** glass panels
- For 12-15mm glass



CB-180

- **Glass to wall** clamps
- For 8-12mm glass



PV-135

- Corner glass clamp
- To hold **135°** glass panels
- For 8-12mm glass

Informações de embalagem

Cada um em um saco plástico e depois em uma caixa de papelão.



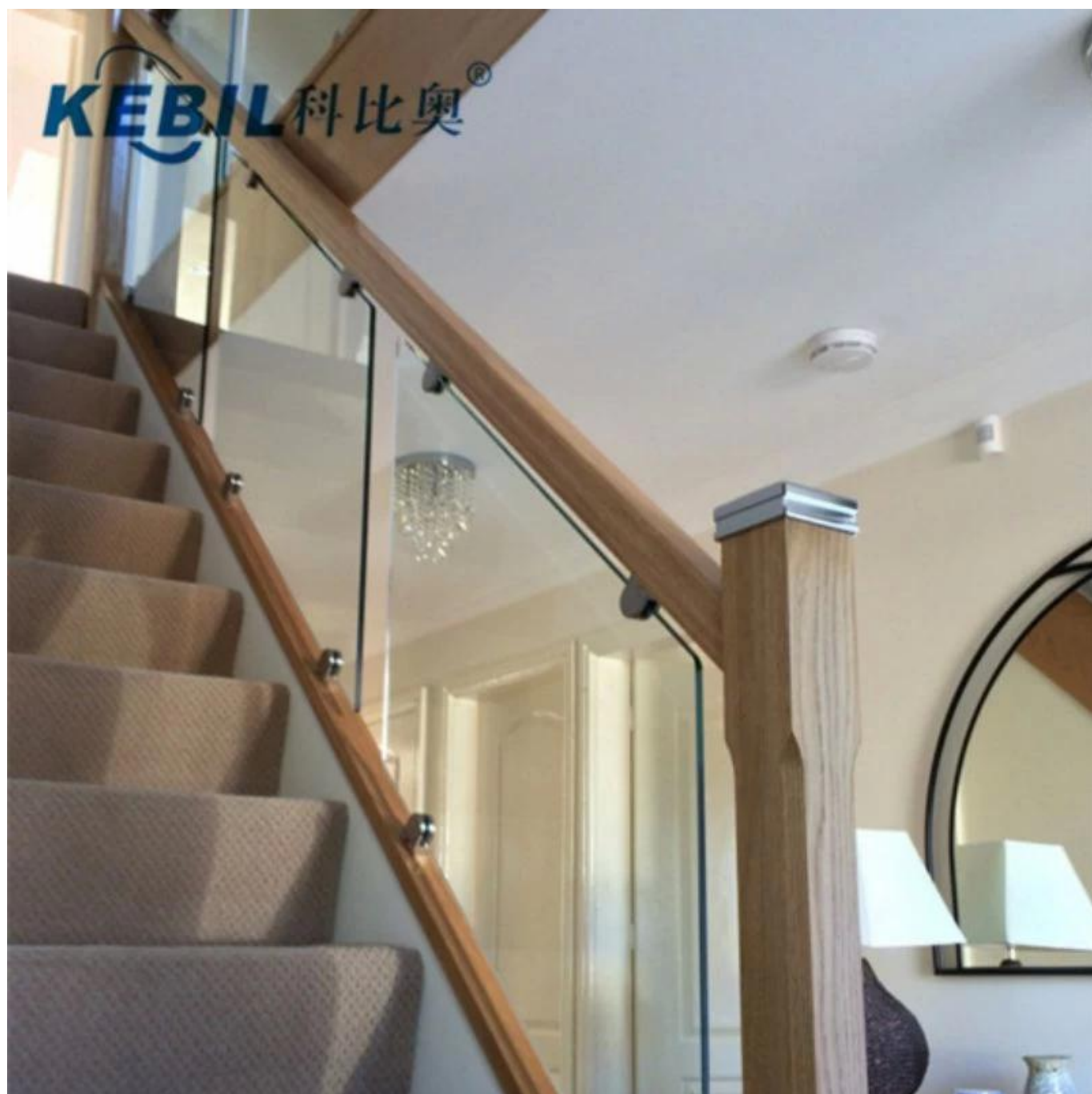


Produção em massa





Imagem do Projeto





Se você tiver qualquer dúvida, não hesite em contactar-me.

Frank Fang

Telefone / WhatsApp / Wechat: +8615906261741, Skype: launch-02

Email: sales02@launch-china.cn

Email: sales02@launch-china.cn