

## **Черный матовый цветной стеклянный зажим G105 с плоской спиной для квадратного поста / полюса или настенного крепления**

### **Продуктописание:**

Модель: G105.

Материал: AISI 304 / AISI 316 / AISI 316L

Готово: атлас / зеркало / черное гальваническое / черное или белое порошковое покрытие

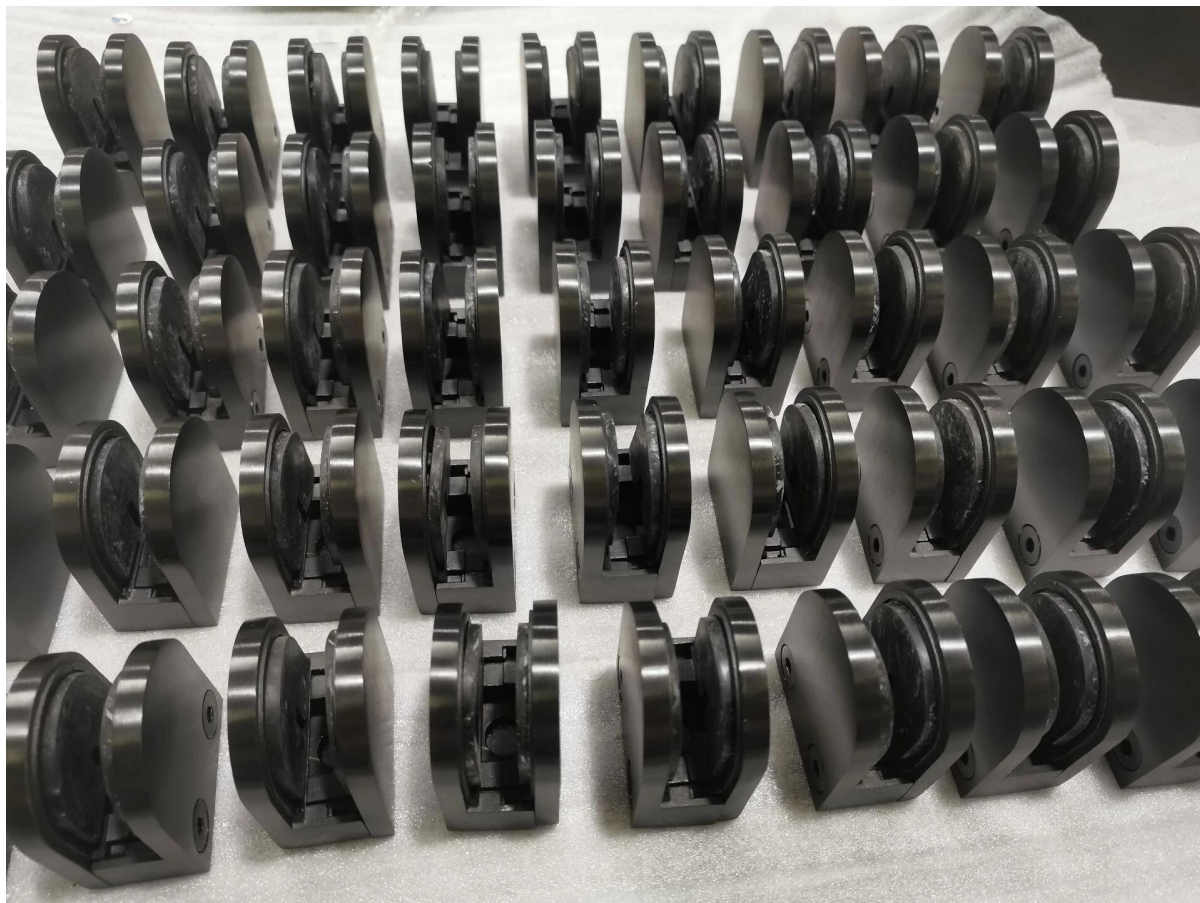
Размер: 54 \* 45 \* 28 \* 14 мм

Вес: 236г

Для толщины стекла 10-12 мм

### **Продуктфотографии:**







**G105**

**Сатинфиниш:**



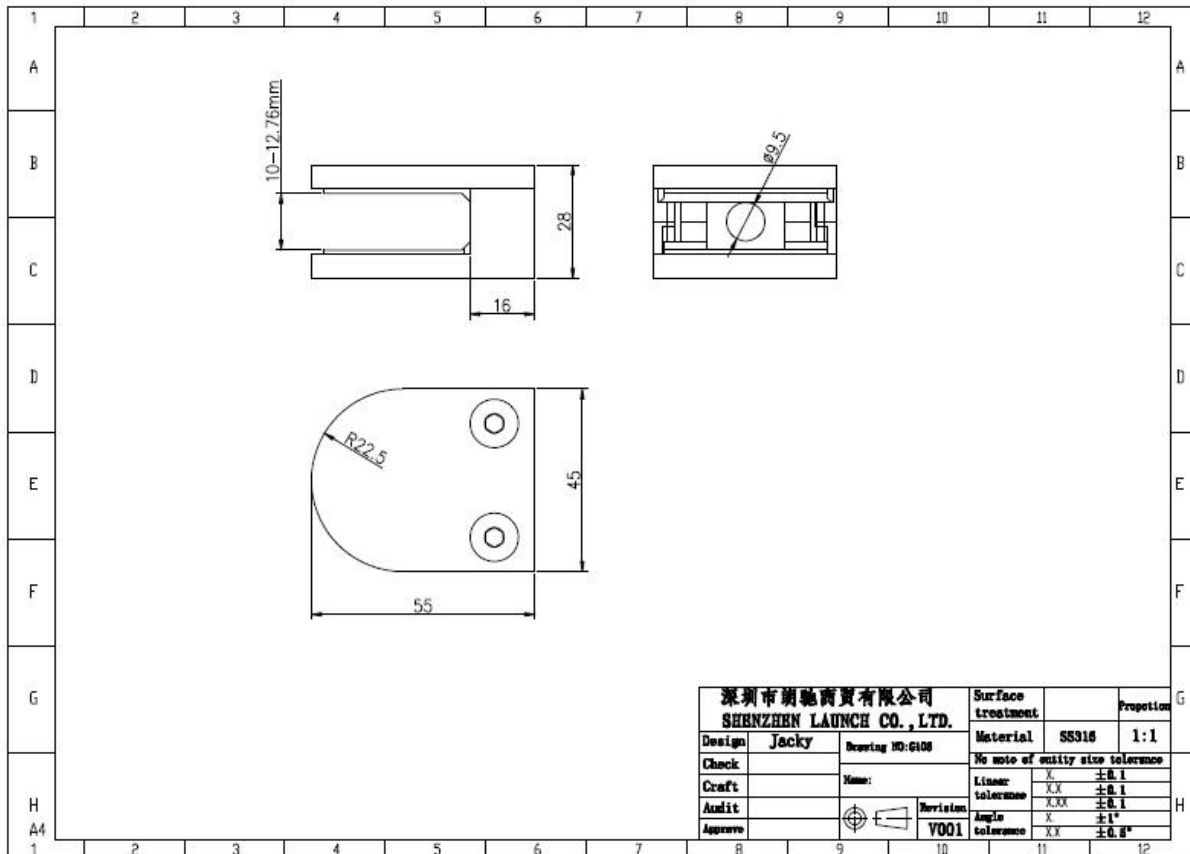
**Зеркальное отделку:**



**Чернить гальванизм финиш:**



**Измерение Рисование:**



**Упаковка подробности:**





**Монтаж:**

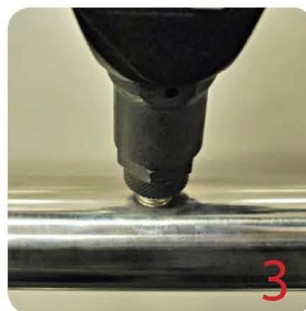
## Glass Clamp Installation Guide



Mark and centre punch desired location of blind rivet nut location.



Drill centre punched hole in tube to suit blind rivet nut.



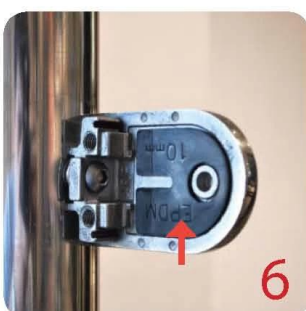
Insert blind rivet nut into tube and fasten with blind rivet tool.



Check installed blind rivet nut is secure and ready for install.



Align half glass clamp with blind rivet nut inline position. Screw in button head cap screw into thread and tighten with hex key.



Select appropriate rubber gasket to suit glass panel thickness. Install rubber gasket into both sides of glass clamp. (Note rubber gasket marked with sizes).



If heavier clamping load is required please use supplied glass clamp pin, during the install process. Note glass panels will require drilling in order to fit glass clamp pins.



Fit glass panel into position, install second half of glass clamp secure with provided hex screws.



Tighten glass clamps with hex key, and check glass panel are secure with no movement.





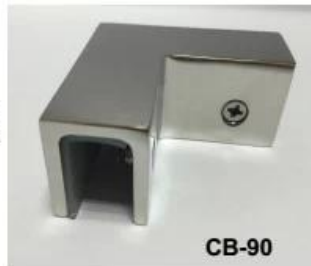


**Другие стеклянные зажимы дизайн:**



**BC-80x35**

- Square 80x35mm clamps
- To hold **180°** glass panels
- For 8-12mm glass



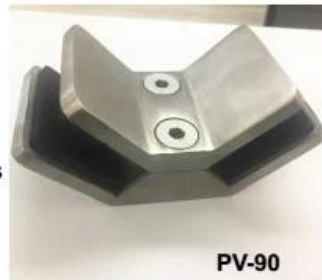
**CB-90**

- Corner glass clamp
- To hold **90°** glass panels
- For 8-12mm glass



**BC-60**

- Round  $\phi 60$ mm clamps
- To hold **180°** glass panels
- For 8-12mm glass



**PV-90**

- Corner glass clamp
- To hold **90°** glass panels
- For 12-15mm glass



**CB-180**

- **Glass to wall** clamps
- For 8-12mm glass



**PV-135**

- Corner glass clamp
- To hold **135°** glass panels
- For 8-12mm glass

Drawing	Picture	Ref.	A	B	C	D	E
		G108	55	55	30	11	0
		G108R	58	55	30	11	R25.4
		G101	51	41	25	11	0
		G101R	55	41	25	11	R21.5/R25.4
		G102	44	44	25	11	0
		G102R	48	44	25	11	R21.5/R25.4
		G103	50	40	22	8	0
		G104	50	40	26	12	0
		G105	54	45	28	14	0
		G107	63	45	28	14	0
		G103R	52	40	22	8	R21.5
		G104R	52	40	26	12	R21.5
		G105R	58	45	28	14	R21.5/R25.4
		G107R	66	45	28	14	R21.5/R25.4
		G106	50	40	25	12	0
		G106R	52	40	25	12	R21.5/R25.4

**Добро пожаловать, чтобы связаться с компанией для цитаты:**

**Венди: [sales04@launch-china.cn](mailto:sales04@launch-china.cn)**

**Телефон / Wechat / WhatsApp: +86 15989339827**